

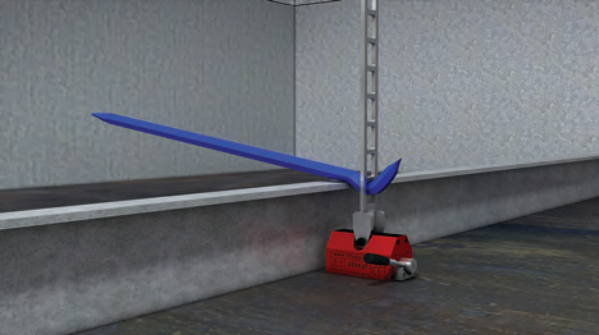


Fit Up Gear
Innovators of Fitting Aids

No-MAR
Non-Marring Fitting Tools



2020 PRODUCT CATALOG





Fit Up Gear
Innovators of Fitting Aids

Pages 1-14



Pages 15-27

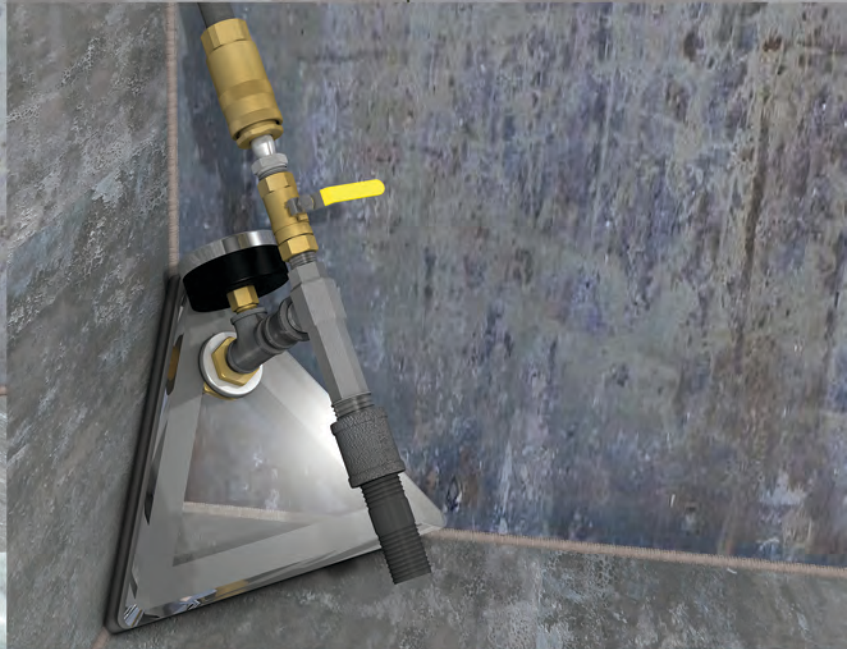
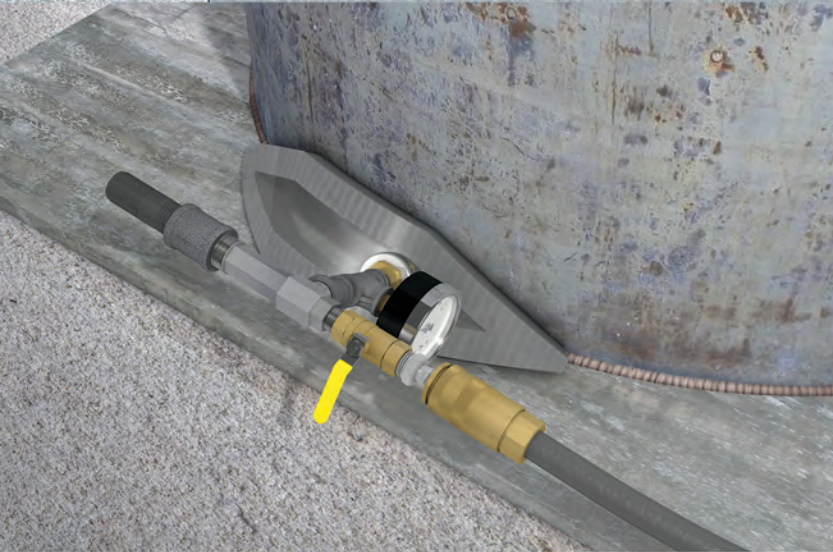
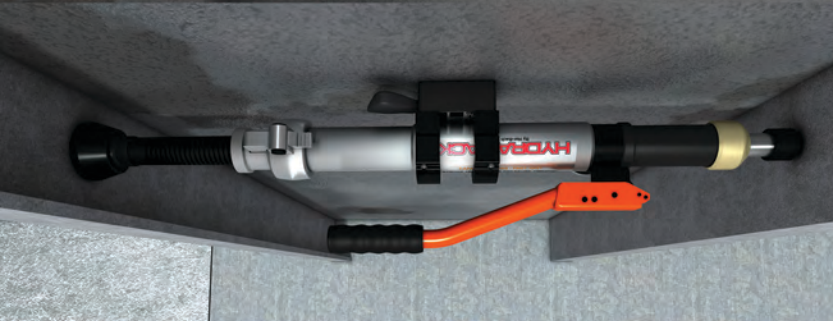


Pages 28-40



Engineered/Certified Padeyes

Pages 41-44





Fit Up Gear
Innovators of Fitting Aids

Leading innovator of fitting tools that aid in the fabrication of storage tanks, ships, barges, rigs as well as many other structural applications. All of our products are designed to lower your costs and make fabrication easier and faster. We are constantly developing new tools and equipment to assist your manufacturing process.

Changing the mindset of the welding industry!

www.fitupgear.com

FITTING AIDS



WARNING: Do not perform any weld on Key Plates. Welding on the high tensile material Key Plates are made from will lead to product failure.

Key Plate

This key plate is drop forged from one piece of plate, gusseted and reinforced in all the right places to give more strength than any other lightweight key plate in the field today. At 12 pounds, this forged key plate is 2/3 the weight of conventional key plates. Quenched and tempered, it has now truly become a tool for the trade.

Used in conjunction with our Bull Pins and Blank Nuts

Weight: 12 lbs

PART: KP-F3

220 per crate

Video Demonstration:
fitupgear.com/fitupgear-products/fitupgear-key-plate



Cup Shoe Key Plate

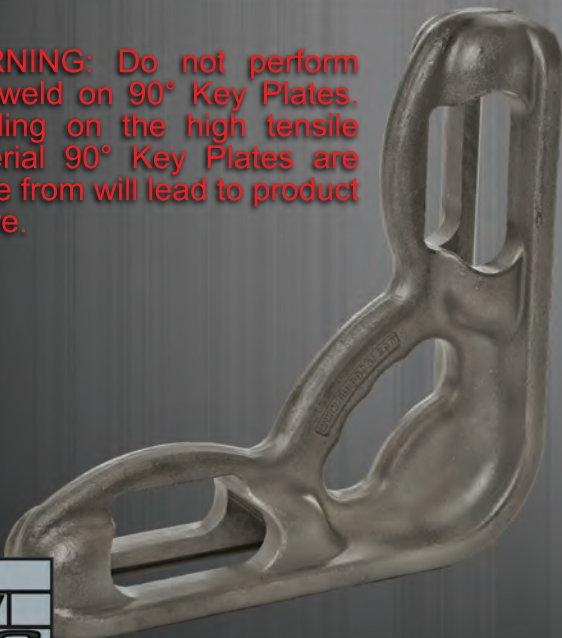
Heavy duty construction with formed, stamped and welded cup shoes and additional u-bar stiffener make the strongest possible key plate for heavy wall tanks. Recommended for 3/4" material and above.

Used in conjunction with our Bull Pins and Blank Nuts

Weight: 16.3 lbs

PART: KP-CSS

WARNING: Do not perform any weld on 90° Key Plates. Welding on the high tensile material 90° Key Plates are made from will lead to product failure.



90° Key Plate

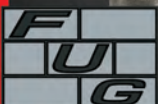
Like our standard Key Plate except it works at a 90° angle allowing it to push and pull walls as well as raising and lowering.

Used in conjunction with our Bull Pins and Blank Nuts

Weight: 15 lbs

PART: KP-90

Video Demonstration:
fitupgear.com/fitupgear-products/fitupgear-90-key-plate



Hinged Key Plate

With 110° of movement this key plate allows for use in numerous angles where fit up is needed while still being able to push and pull.

Used in conjunction with our Bull Pins and Blank Nuts

Weight: 14.2 lbs

PART: KP-HN

WARNING: Do not perform any weld on Hinged Key Plates. Welding on the high tensile material Hinged Key Plates are made from will lead to product failure.



Gunny Dog

This new non-welded fitting aid assists in the make-up and gapping of vertical seams, deck seams, knuckles, and other plate joints that typically require the use of dogs, wedges, fishtail jacks, or other weld-on fitting aids. Also useful in fitting and aligning pipe. Set includes: dog, 1/8" standard shim, and block. Parts can be ordered separately. Custom shim sizes also available.

Set - includes dog, 1/8" standard shim, and block

Weight: 10 lbs

PART: GD-15



Video Demonstration:
fitupgear.com/fitupgear-products/fitupgear-gunny-dog



WARNING: Do not perform any weld on Gunny Dogs. Welding on the high tensile material Gunny Dogs are made from will lead to product failure.

Poison Pads

To avoid the high cost of a key plate made completely of stainless steel, we offer fitted 304 stainless steel Poison Pads to eliminate carbon impregnation while tools are being used on stainless items.

Weight: .5 lbs

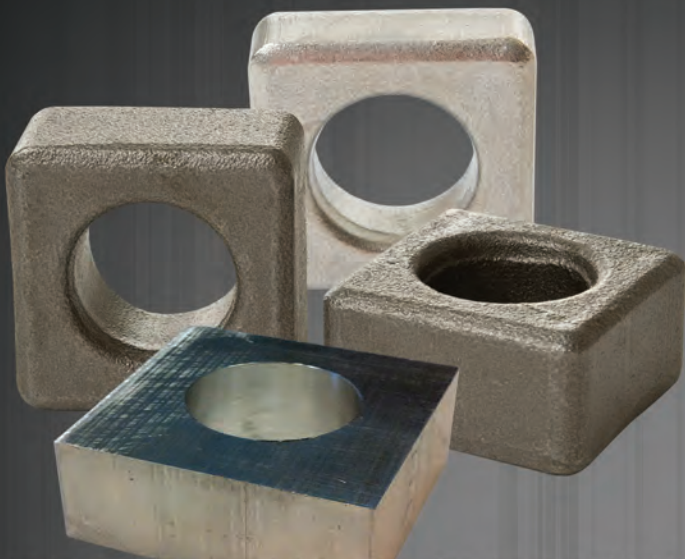
PART: SSPP

Key Plate with pair of Poison Pads tacked in place

Weight: 13 lbs

PART: KPSS





Standard A36 material to give the best weldability and yield. 1 1/8" hole in all types. Offered in exotic alloys as well.

Blank Nut

Used in conjunction with our Key Plate, 90° Key Plate, Hinged Key Plate, or Cup Shoe Key Plate, and Bull Pins to manipulate steel panels.

A36	304 Stainless Steel	Aluminum
PART: BN-238 2"x2"x3/8" Weight: .29 lbs	PART: BN-238SS 2"x2"x3/8" Weight: .28 lbs	PART: BN-238AL 2"x2"x3/8"
PART: BN-234 2"x2"x3/4" Weight: .59 lbs	PART: BN-234SS 2"x2"x3/4" Weight: .57 lbs	PART: BN-234AL 2"x2"x3/4"
PART: BN-210 2"x2"x1" Weight: .83 lbs	PART: BN-210SS 2"x2"x1" Weight: .77 lbs	PART: BN-210AL 2"x2"x1"

WARNING: Do not perform any weld on Bull Pins. Welding on the high tensile material Bull Pins are made from will lead to product failure. Once Bull Pins begin to mushroom and fracture at striking point, they must be discarded and replaced to avoid injury.

Bull Pin

Our bull pins must pass numerous tests to be approved for sale. With our own chemistry and heat treating process we have created the toughest bull pin in the industry.

12"x1 1/4", 2" of flat tapering down to 7/16"
Weight: 2.35 lbs

PART: BP-HT

304 Stainless Steel Version
Weight: 2.16 lbs

PART: BP-SS

Version available with lanyard attached at additional cost to secure bull pin and prevent injuries below

PART: BP-LAN



WARNING: Do not perform any weld on Wedges. Welding on the high tensile material Wedges are made from will lead to product failure. Once Wedges begin to mushroom and fracture at striking point, they must be discarded and replaced to avoid injury.

Money Maker Wedges

Large tempered steel Money Maker Wedge.
12"L x 2"W x 2"H tapering to 3/32"

Weight: 7 lbs
PART: MM-1

Medium tempered steel Money Maker Wedge.
8"L x 1-1/4"W x 1-1/4"H tapering to 1/8"

Weight: 1.94 lbs
PART: MM-2

Small tempered steel multi-purpose wedge.
4" L x 1" W x 1" H (at heel) - Taper = 1/2"-1/8"

Weight: .46 lbs
PART: MP-WEDGE



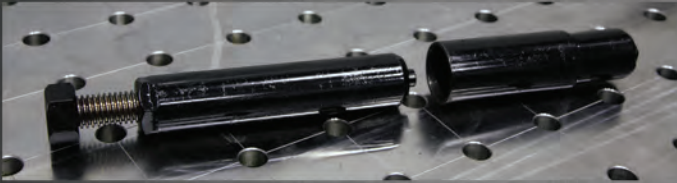
Pusher Rod

Pusher Rod (also referred to as a Punch Bar and Porta Power Extension) with nipple on threaded end without handle.

18" Pusher Rod
PART: PR-18

33" Pusher Rod
PART: PR-33

54" Pusher Rod
PART: PR-54



Pusher Rod Base

Provides a secure base when using extensions with your porta power. Helps prevent accidental slip-offs. Notched to prevent hose damage. 3" diameter X 5-1/2" tall socket accepts most jacks up to 15 ton.

Used in conjunction with Fit Up Gear Pusher Rods.

Pusher Rod Base
PART: PR-BASE



The ROMY Kit

Replace tired and true half-clamps (sometimes called grasshoppers) with a safe and effective solution. The Romy Kit includes: 1 Romy Base, 1 Down Force Clamp, 1 Side Force Clamp, 1 Push Plate, 1 Bull Pin, 2 BN-238 3/8" thick and 2 BN-234 3/4" thick Blank Nuts.

Components also sold separately.

Weight: 25 lbs

PART: ROMY-KIT

WARNING: Do not perform any weld on Romy Kit parts other than Blank Nuts. Welding on the high tensile material all other components are made from will lead to product failure.

Video Demonstration:
fitupgear.com/fitupgear-products/fitupgear-romy-kit



F-Clamp

- 10X faster than C-Clamps
- Clamping pressure of 2,600 lbs (26-Series) or 5,200 lbs (52-Series)
- Made of heat treated steel with nickel/chrome plating
- All of our F-Clamps come standard with replaceable pads

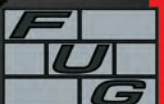
PART: FC2612 (26-Series - 12" Long)
Weight: 7.3lbs

PART: FC5224 (52-Series - 24" Long)
Weight: 16 lbs

WARNING: Do not perform any weld on F-Clamps. Welding on the high tensile material F-Clamps are made from will lead to product failure.



Replacement Pads Available





Rotary Ground

1200 amp ground used for welding on tubular steel to overcome twisting of cables.

Weight: 15.25 lbs

PART: GC-1200

WARNING: Do not perform any weld on Rotary Ground. Welding on the high tensile material Rotary Grounds are made from will lead to product failure.

Made of heat treated steel, these bars will take whatever you throw at them. Built to suit numerous job functions related to the alignment of large steel panels. From field erected storage tanks to ship and barge builders, we have the perfect bar for you.

PART: FUB-CB32

32" Connecting Bar made from 7/8" hex bar
Weight: 5.3 lbs

PART: FUB-40

40" Crowbar w/ 40° bend made from 7/8" hex bar
Weight: 6.8 lbs

PART: FUB-30GN

30" Gooseneck Crowbar made from 7/8" hex bar
Weight: 6.0 lbs

PART: FUB-39GN

40" Gooseneck Crowbar made from 7/8" hex bar
Weight: 6.93 lbs

PART: FUB-40SS

40" 304 Stainless Steel
Crowbar made from 7/8"
hex bar
Weight: 6.8 lbs

Fit Up Bars

PART: FUB-MOKUM

46" Crowbar made from 1 1/4" round bar
Weight: 12.5 lbs

PART: FUB-48GN

48" Gooseneck Crowbar made from 7/8" hex bar
Weight: 8 lbs

PART: FUB-GATOR

42" Crowbar with gripping teeth made from 7/8" hex bar
Weight: 9.6 lbs

PART: FUB-CB53

53" Crowbar made from 1 1/4" round bar
Weight: 17.4 lbs

Part: FUB-BSMOKUM

38" Bracket Strap Mokum Bar



WARNING: Do not perform any weld on Fit Up Bars. Welding on the high tensile material Fit Up Bars are made from will lead to product failure.

Propane Blast Nozzle

Used in conjunction with our Inspirator to take pre-mixed air and gas to create a nice uniform flame.

Weight: .10 lbs

PART: PBN



Need a custom built preheating system?
We can build it for you. Call us for pricing.

Inspirator

Used to create a regulated mix of atmospheric air (no pressure) and LP gas for uniform distribution through header assembly for preheating metal.

1/2" NPT Inlet - 1-1/4" NPT Outlet

Weight: 4.0 lbs

PART: PBI



Wedge Pin

Wedge for aligning vertical sheets similar to the Bull Pin. Used in conjunction with Wedge Key Shim.

Weight: .78 lbs

Carbon Steel Version
PART: WP

Stainless Steel Version
PART: WP-SS



Video Demonstration:
fitupgear.com/fitupgear-products/fitupgear-wedge-pin

Carbon Steel

PART: WKS-A - 13 gauge thickness (\pm mill tolerance)

PART: WKS-B - 11 gauge thickness (\pm mill tolerance)

PART: WKS-C - 10 gauge thickness (\pm mill tolerance)

PART: WKS-D - 1/4" thickness (\pm mill tolerance)

304 Stainless Steel

PART: WKS-ASS - 13 gauge thickness (\pm mill tolerance)

PART: WKS-BSS - 11 gauge thickness (\pm mill tolerance)

PART: WKS-CSS - 10 gauge thickness (\pm mill tolerance)

PART: WKS-DSS - 1/4" Thick (\pm mill tolerance)

Wedge Key Shim

Used for girth seam fit up on tanks and horizontal seams where a gap is required. Requires no clean-up after usage. Solely based on gravity to assist in the fit. Must be used in conjunction with Shim Pin and Wedge Pin. Works on 1/4" - 1" plate. Sold based on thickness of shim (thickness can vary due to mill tolerances).



Video Demonstration:
fitupgear.com/fitupgear-products/fitupgear-wedge-key-shim

Key Shim Selector

Key Shim #	Shell Thickness	Available Gaps
1	3/16" - 1/2"	A & B
2	1/2" - 3/4"	A,B, & C
3	3/4" - 1"	A,B, & C
4	1" - 1 1/4"	A,B, & C
5	1 1/4" - 1 1/2"	A,B, & C
6	1 1/2" - 1 3/4"	A,B, & C
7	1 3/4" - 2"	A,B,C, & D
8	2" - 2 1/4"	A,B,C, & D
9	2 1/4" - 2 1/2"	A,B,C, & D
10	2 1/2" - 2 3/4"	A,B,C, & D
11	2 3/4" - 3"	A,B,C, & D

A = 13 ga thick, B = 11 ga thick, C = 10 ga thick, D = 1/4" thick
EXAMPLE OF PART NUMBER
KS - 1 - A This would be a shim for 3/16" - 1/2" plate for a 13 ga gap

Video Demonstration:
fitupgear.com/fitupgear-products/fitupgear-key-shim

Key Shim

Used for girth seam fit up on tanks and horizontal seams where a gap is required. Requires no clean-up after usage. Solely based on gravity to assist in the fit. Variable lengths on shims based on material thickness being fit. Must be used in conjunction with Shim Pin and Bull Pin. Added extra inch for a gloved hand. Sold based on thickness of shim (thickness can vary due to mill tolerances) and shell thickness of material being shimmed.

Thicknesses available
(\pm mill tolerance):
13 GA, 11 GA, 10 GA, and 1/4"

(See Key Shim Selector chart to
determine part number)

Also available in 304 Stainless Steel



Video Demonstration:
fitupgear.com/fitupgear-products/fitupgear-shim-pin

Shim Pin

Round bar with stamped-in stops. Used with Key Shim or Wedge Key Shim to assist horizontal seam alignment.

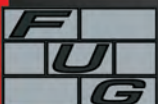
3/4"x5"
Weight: .63 lbs

PART: SP-345

304 Stainless Steel Version

3/4"x4"
Weight: .51 lbs

PART: SP-344SS



U-Bar

Also referred to as worms, U-Bars are used for fitting floors on water tanks, taking out high-lows, or securing all types of lap and butt joints. Safer replacement for conventional dog and wedge system.

5/8" x 5/8" x 6 1/2"

PART: UB-586
Weight: .795 lbs

304 Stainless Steel Version
PART: UB-586SS
Weight: .805 lbs

Aluminum Version
PART: UB-586AL
Weight: .29 lbs

Video Demonstration:
fitupgear.com/fitupgear-products/fitupgear-u-bar



Used in conjunction with Bull Pin

Key Channel

Key channel is designed to form a stiffener between two horizontal sheets giving more stability to each ring. Also known as a strongback in some industries.

4' L x 5" W x 2" H

Weight: 26.6 lbs

PART: KC-45

Used in conjunction with Bull Pins and Blank Nuts



Finger Bar

Component used to assist in the make-up of high-low mismatch while fitting.

Weight: .83 lbs

PART: FB-1426



Bracket Strap

Used for adhering scaffolding to tanks or ships. Simply weld on and drop scaffolding into opening.

Weight: 1.75 lbs

PART: BS-214

304 Stainless Steel Version

Weight: 1.73 lbs

PART: BS-214SS



Double "U" Bracket Strap

Used for adhering scaffolding.

Weight: 1.3 lbs

PART: BS-UU



Scaffolding Boards

Developed after years of study and testing, Pin-Lok Scaffold Planking was designed to be the strongest, safest, most durable plank on the market.

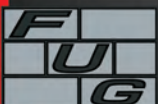
In the patented Pin-Lok process, multiple structural members of Dense Select Grade lumber are milled to size. The center strip is sealed to keep out moisture and job-site chemicals and aligned for the greatest possible strength from the material. Heat-treated twist steel pins are then inserted every 22 inches along the plank's length to bond the three pieces into a single solid unit. In tests, the resulting plank resists point, center and shock loads which destroyed standard DI65 and high-grade laminated wood planking.



Weight: 3.9 lbs per foot

10-foot Boards
PART: PS1095

12-foot Boards
PART: PS1295

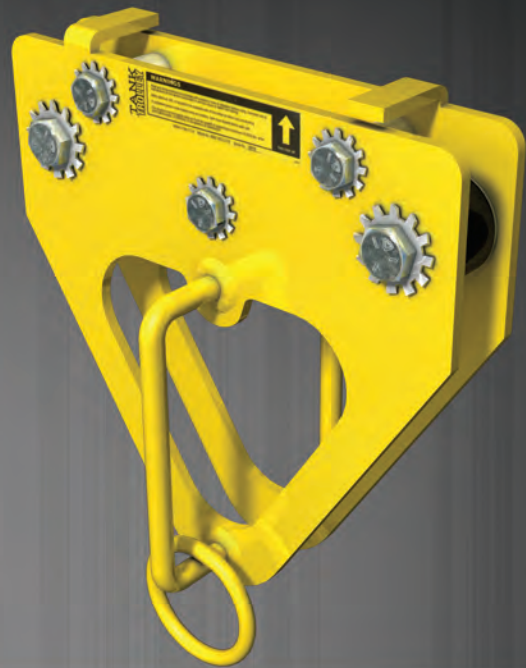


Tank Trolley

The SM/RTC Tank Trolley is a mobile anchoring point that rolls along the top ridge of field erected storage tanks or other similar surfaces. Provides continuous tie-off of lanyard while working. The trolley contains two bearings that roll along the top of the tank. A forged steel O-ring provides a convenient anchoring point for fall protection equipment.

Weight: 14 lbs

PART: SM/RTC-TankTrolley



Fit Up Gear Tool Baskets

Fit Up Gear Tool Baskets are used to carry, hoist and keep all your items together. Also stops items from being knocked off and hitting people or equipment below. Replaces the need for and misuse of 5-gallon buckets.

Weight: 8.44 lbs

PART: FUG-BOX



Welder's Windshield

Patent # US 6,772,933 B2

Overcome the elements and weld outside without too much set up or breakdown time. Reduce arc flash occurrences, when multiple operators are working in tight quarters. Steady rest support for operator's hands and arms, allowing constant standoff from work while reducing operator fatigue.

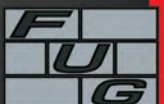
33.5" x 7" x 4"
Weight: 5.23 lbs

Magnetic Version for Ferrous Surfaces
PART: WW-1

Non-Ferrous Version with Suction Cups
PART: WW-1SC



The WW-1, is designed and engineered from 16-gauge carbon steel which is laser cut and then precision broke to give it greater strength characteristics. The whole piece is then powder coated with black crinkle finish to reduce glare. With two 60 lb pull magnets on opposing corners the WW-1 will hold firmly to any flat work piece of ferrous material. Design allows for multiple units to be stacked upon one another for shipping purposes.



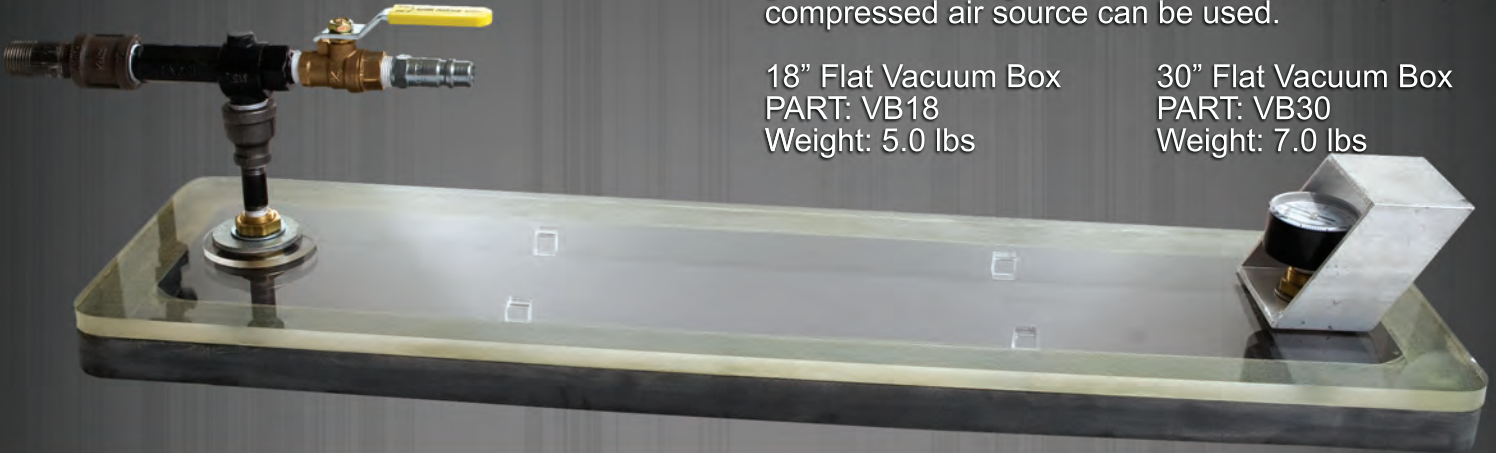
Vacuum Box - Flat

Custom sizes available - Please call

Used for leak testing in building of ships, barges, tanks, or any seal weld application. Designed for use in flat areas. Double-sided gasket design ensures a good seal during vacuum test. Vacuum pump or compressed air source can be used.

18" Flat Vacuum Box
PART: VB18
Weight: 5.0 lbs

30" Flat Vacuum Box
PART: VB30
Weight: 7.0 lbs



3-Way
Inside Corner
Vacuum Box

3-way outside corner and 3-way inside corner vacuum boxes also available.

Custom sizes also available - Please call

Vacuum Box - Corner

Used for leak testing in building of ships, barges, tanks, or any seal weld application. Designed to be used in corners. Double-sided gasket design ensures a good seal during vacuum test. Vacuum pump or compressed air source can be used.

18" Corner Vacuum Box
PART: VB18C
Weight: 5.0 lbs

30" Corner Vacuum Box
PART: VB30C
Weight: 7.0 lbs



30" Flexible Vacuum Box

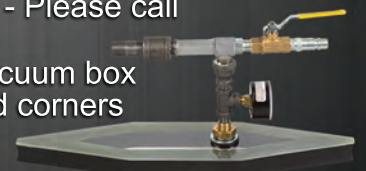
Used for leak testing in building of ships, barges, tanks, or any seal weld application. Designed for use on pipe or any concave or convex surface. Double-sided gasket design ensures a good seal during vacuum test. Vacuum pump not included. Vacuum pump or compressed air source can be used.

Vacuum Box - 3" wide X 30" long Flexible
PART: VB30FX
Weight: 7.5 lbs

Custom sizes also available - Please call



Boat tail flexible vacuum box
available for curved corners



Vacuum Pump

Vacuum Pump for use in conjunction with our various vacuum boxes to vacuum test weld seams. Features a regulator, quick fitting coupling, pressure gauge, warning buzzer, water filter with cartridge, auxiliary power plug, and 98" (2.5M) air hose.

- Max. Vacuum: -13 psi (-.9 bar / 26.5 in mercury)
- Airflow: 1.07 CFM (30.5 L/Min)
- Power Input: 110V / 200W
- Protection: IPX4

PART: VB-PUMP

Weight: 15 lbs



Gas Surge Preventer

Reduce inert gas usage by as much as 50% on GMAW and GTAW welding with the new GSP.

PART: GSP- Available in 7 sizes (see chart)

GSP Flow Rates with 75/25 Mix

GSP #	PSI Required to maintain 40 CFH	25 PSI	30 PSI	35 PSI	40 PSI	50 PSI	65 PSI	80 PSI
GSP-1	20 PSI	44 CFH	48 CFH	53 CFH	59 CFH	71 CFH	*	105 CFH
GSP-2	28 PSI	38 CFH	42 CFH	45 CFH	49 CFH	57 CFH	*	85 CFH
GSP-3	34 PSI	32 CFH	37 CFH	41 CFH	45 CFH	50 CFH	*	76 CFH
GSP-4	35 PSI	31 CFH	36 CFH	40 CFH	43 CFH	49 CFH	*	72 CFH
GSP-5	50 PSI	24 CFH	26 CFH	30 CFH	35 CFH	40 CFH	48 CFH	55 CFH
GSP-6	59 PSI	21 CFH	23 CFH	25 CFH	29 CFH	35 CFH	43 CFH	49 CFH
GSP-7	75 PSI	18 CFH	20 CFH	22CFH	23 CFH	28 CFH	35 CFH	42 CFH



5/8"-18 NPT
Inlet and Outlet

Gas Surge Preventers are restricted flow orifices designed to work two-fold. The GSP design removes all gas surge associated with GTAW and GMAW welding, while fixing the gas flow at a predetermined flow according to PSI.

Gas surge is the sudden blast of inert gas after opening the valve of a tig torch or pulling the trigger of a mig gun. Several factors come into place when evaluating cost savings on gas surge. The two biggest factors are how many times your welders start and stop a weld and distance from the gas supply (the longer and older the gas hose, the bigger the surge). Back pressure builds up at valves and solenoids like the nozzle on a garden hose. When you open that nozzle, you get a blast of water until back pressure is gone and actual flow rate is established. This might be beneficial when cleaning the driveway, but welding surge adds no benefit to the weld and at times could be detrimental to the weld deposit. Minimizing surge could save you hundreds or even thousands per month on your gas bill.

Another benefit of the GSP is the capability to control maximum CFH (cubic feet per hour) through the torch during a weld. This is achieved by customizing the GSP according to line PSI (see GSP Flow Rate chart above). This chart accommodates bulk gas as well as bottle users. When utilizing GSPs on bulk gas manifolded systems, you can do away with regulators and flow meters at each gas drop, eliminating repair and replacement cost of such devices. CFH is determined by PSI when utilizing a GSP and with seven GSPs to choose from, we have the right one for you.

Flux Belt

Used with automatic girth welding machines to hold flux up against tanks. Offered with a proprietary coating for longer life.

39" Flux Belt

PART: FB-39-4-X5

Weight: 1.3 lbs

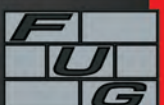
41" Flux Belt

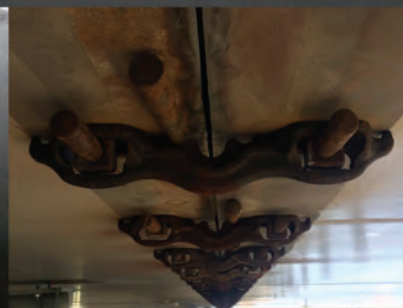
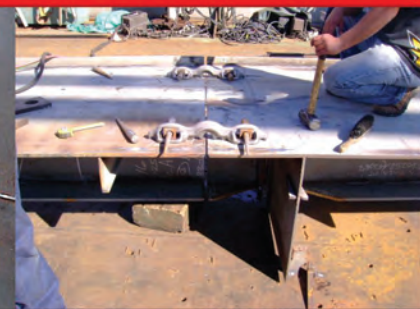
PART: FB-41-4-X5

Weight: 1.5 lbs



Custom sizes available - Please call





Third-party testing is performed to certify material specifications and ensure quality products





NO-MAR[®]
Non-Marring Fitting Tools

NO-MAR non-marring fitting tools utilize powerful compact magnets or mechanisms that are up to 100 times faster than traditional methods and require no temporary welding or grinding that will mar your metal.

Changing the mindset of the welding industry!

www.fitupgear.com/no-mar-products

NON-MARRING TOOLS

Hydra-Pack

With 5 tons or 10 tons (depending on model) of self-contained hydraulic pushing power, you can adjust misaligned stiffeners, push items into place, and perform many other pushing tasks. Easy pull-out saddle end to quickly adjust to the length needed and minimize pumping.

- 5 or 10-Ton Hydraulic Cylinder (load return "C" and spring return)
- Hydraulics extend up to 3.74" (95mm)
- Max Working Pressure = 700 kg/cm²

5-Ton Model

PART: HP5T

Overall Collapsed Length = 25.6" (650mm)

Overall Extended Length = 34.45" (875mm)

Piston Stroke = 3.74" (95mm)

Pull-Out Saddle Stroke = 5" (128mm)

Weight: 14.8 lbs

Video Demonstration:

fitupgear.com/fitupgear-products/fitupgear-hydra-pack

10-Ton Model

PART: HP10T

Overall Collapsed Length = 26.77" (680mm)

Overall Extended Length = 34.25" (870mm)

Piston Stroke = 3.15" (80mm)

Pull-Out Saddle Stroke = 4.33" (110mm)

Weight: 24.25 lbs

Accessories

Hydra-Pack Switchable Magnet Attachment

PART: HP-SMA-750

Use Hydra-Pack Overhead or Vertically

5-Ton Model Extension/Shortening Kit

PART: HP5T-EXKIT

Includes: Shortening End Cap, 8-5/8" (220mm) Extension, and 17.25" (440mm) Extension

10-Ton Model Extension Kit

PART: HP10T-EXKIT

Includes: 8-5/8" (220mm) Extension and 17.25" (440mm) Extension

Hydra-90

90° hydraulic press for pushing walls, stiffeners, or other structural members that are joined at a 90° angle. With 5 tons of hydraulic pushing power, you can adjust misaligned stiffeners, push items into place, and perform many other 90° pushing tasks.

- 5-Ton Hydraulic Cylinder
- Max Working Pressure = 700 kg/cm²
- Stroke of Grippers = 2"
- Size = 8.47" W (at recessed grippers) x 8.64" H x 2.61" D (not including handle)

Weight: 7.7 lbs (90° pusher only)

PART: HP-5TC



Video Demonstration:

fitupgear.com/fitupgear-products/fitupgear-hydra-90

Multi-Press

3-ton system used to close gaps where angles and T-section stiffeners transverse. Interchangeable feet allow for connection to flanges or bulb flat profiles or use optional XBAM-L-1000 1,100 lb capacity lift magnets to quickly attach to ferrous metal surfaces.

Simply turn Acme screw after inserting foot opening onto end of section steel flange or bulb profile or securing magnets to pull steel sheets flush at stiffener transverses.

PART: MPS-3T



Bulb Profile Attachment (2)
PART: MP-BULB



Section Flange Attachment (2)
PART: MP-FLANGE



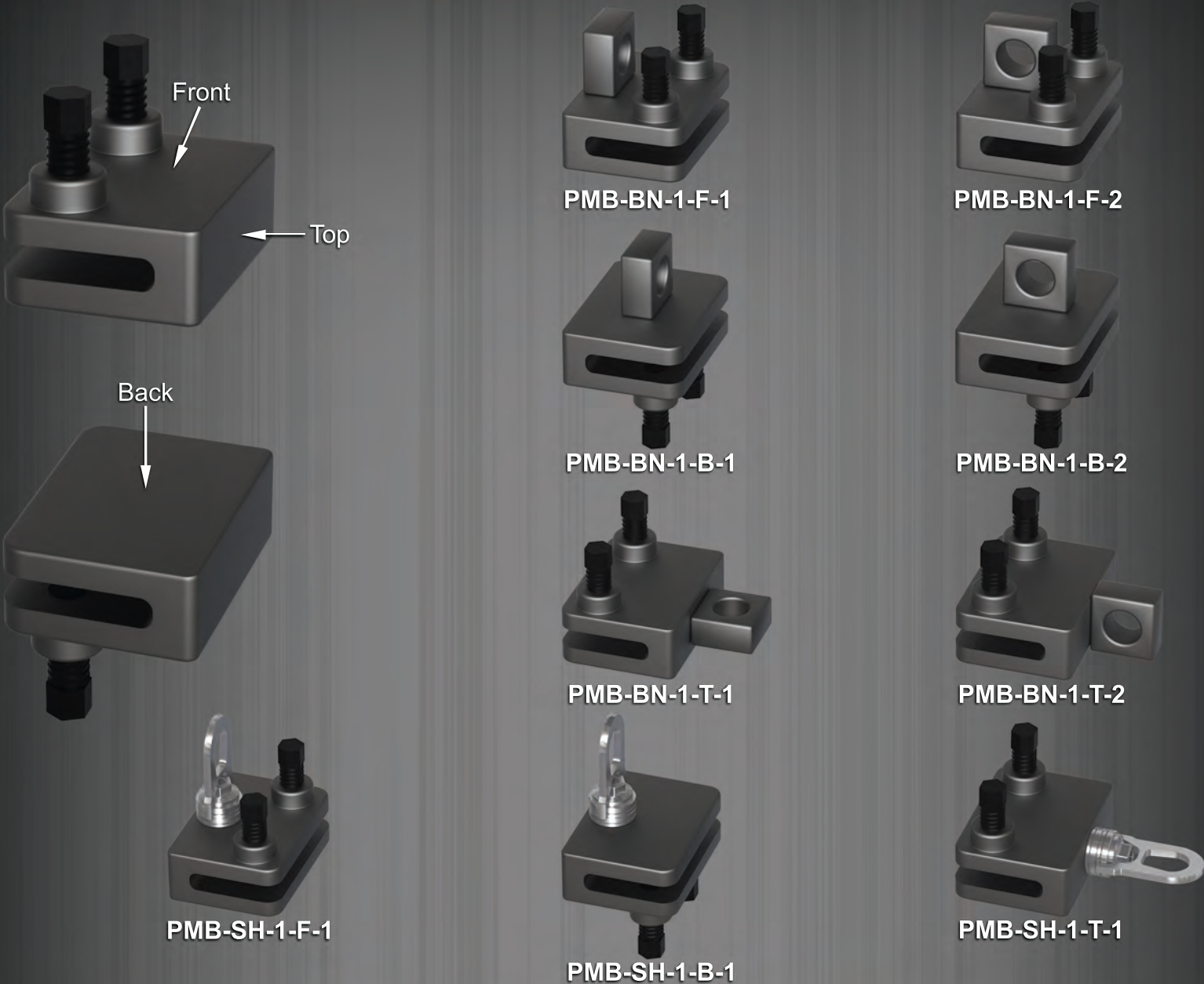
XBAM-L-1000 Magnet Attachment (2)
PART: XBAM-L-1000MP



Custom sizes available

NO-MAR

Pacman Block Configuration Part Numbers



Part Number Configuration Chart



2 Component Example
PMB-BN-2-F1-T1

PMB- BN - 2 - F1 - T1



3 Component Example
PMB-BN-3-F2-T2-B1

PMB- BN - 3 - F2 - T2 - B1

Component to be added to PMB		
Part No.	Brand	Digit
BN-210	FUG	BN
Swivel Hook	Maglogix	SH

How Many Components
1
2
3

Location on Device
Front (F)
Back (B)
Top (T)

Position on Device
1
2

Bulkhead Brace

Used to hold up bulkheads, walls and other structures during construction. Using any combination of 3 optional end mounts, you can easily hold, spin Brace Bar to adjust in place, then weld or use other permanent method to secure workpiece before removing Bulkhead Brace.

PART: BB-84 (Standard 84" Brace Bar with 2 Yoke Ends and 2 Jam Nuts - Brace Bar lengths up to 10' available)

Optional End Mounts (see next page for additional information):

PART: TRex-38 (Clamp for 3"-8" wide Ts)

PART: FUGX-H-1-BN-1 (Magnet)

PART: PMB-BN-1-F-1 (Pacman Block Clamp)

TRex-38 Clamp slips over T-shape, turn until stops hit flange, hand-tighten Eye Bolt to hold in place, tighten side bolts to secure, then turn Eye Bolt inline with Brace Bar Yoke

BB-84 Brace Bar

FUGX-H-1-BN-1 1,100 lb breakaway magnet for easy connection to ferrous surfaces



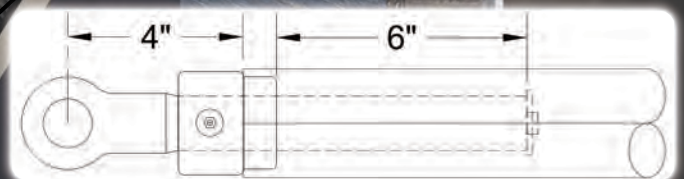
NOT TO BE USED FOR LIFTING

Video Demonstration:
fitupgear.com/fitupgear-products/fitupgear-bhd-brace-clamp

Jam Nut to lock Brace Bar in place

PMB-BN-1-F-1 Pacman Block clamp for flat plate, L-shapes or areas with access to only one side of T-shapes

Washer keeps threaded end from falling out



Bulkhead Brace Optional End Mount TRex-38

Used to clamp 3" to 8" wide T-shapes. Simply place over T-shape, turn until foot stops hit flange, hand-tighten Eye Bolt to hold in place, tighten side bolts to secure, then turn Eye Bolt inline with Brace Bar Yoke.

PART: TRex-38



NOT TO BE USED FOR LIFTING

Bulkhead Brace Optional End Mount Pacman Block

Pacman Block clamp for flat plate, L-shapes or areas with access to only one side of T-shapes.

PART: PMB-BN-1-F-1 (Pacman Block configuration shown in pictures. See Pacman Block configuration page to choose which setup is right for you.)



NOT TO BE USED FOR LIFTING

Bulkhead Brace Optional End Mount Magnet

Using our XBAM-L-1000 1,100 lb breakaway magnet makes for easy connection to ferrous surfaces. outstanding performance on thin walled materials, 70% less weight than standard lifting magnets, effortless and ergonomic lever activation of magnet, and TiN coated, hardened steel magnetic surface.

PART: FUGX-H-1-BN-1

PART: FUGX-H-1-BN-2



FUGX-H-1-BN-1

FUGX-H-1-BN-2



NOT TO BE USED FOR LIFTING

Video Demonstration:
fitupgear.com/no-mar-products/no-mar-mag-pry

Patent #s
US 7,587,800 B2
US 8,240,017 B2



NO-MAR® MAG-PRY®

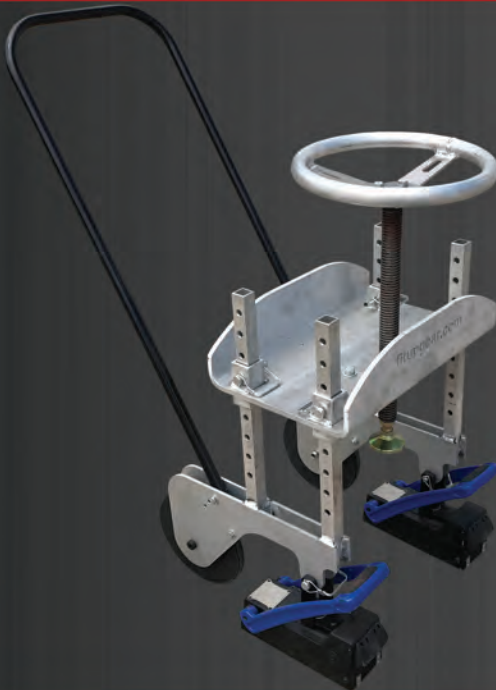
Strong, easy to use magnetic pry bar for material leveling and alignment also known as mismatch or high/low. Eliminates the need for welded tabs. Easy on/off actuation of the Maglogix XBAM-750 magnet provides high breakaway forces on thin plate materials.

750lb breakaway on 1/4" thick material and above. Far exceeds breakaway of any other magnet on the market on thinner materials.

100 times faster than traditional methods!

Weight: 5 lbs

PART: MPML-V2



NO-MAR® Stif-Jak®

Magnetically held press with all aluminum construction for downward pressure on stiffeners in shipbuilding. Uses 2 Maglogix switchable magnets with over 3,000 lbs breakaway strength each and a maintenance-free mechanical tensioning system. Up to 95% time savings.

Weight: 73 lbs

PART: SJ-AL-500SW

Patent #s
US 7,647,681 B1
US 8,291,563 B2
US 8,739,378 B2

Video Demonstration:
fitupgear.com/no-mar-products/no-mar-stif-jak



NO-MAR® Replacement Track Magnets

Update your track welder magnets with easy on/off magnets. Features two 30mm magnets, each with 150 lbs of breakaway force and knobs for easy on/off actuation with locking feature. When off, keep magnets clean.

Replacement Track Magnet Assembly

Weight: 1.76 lbs

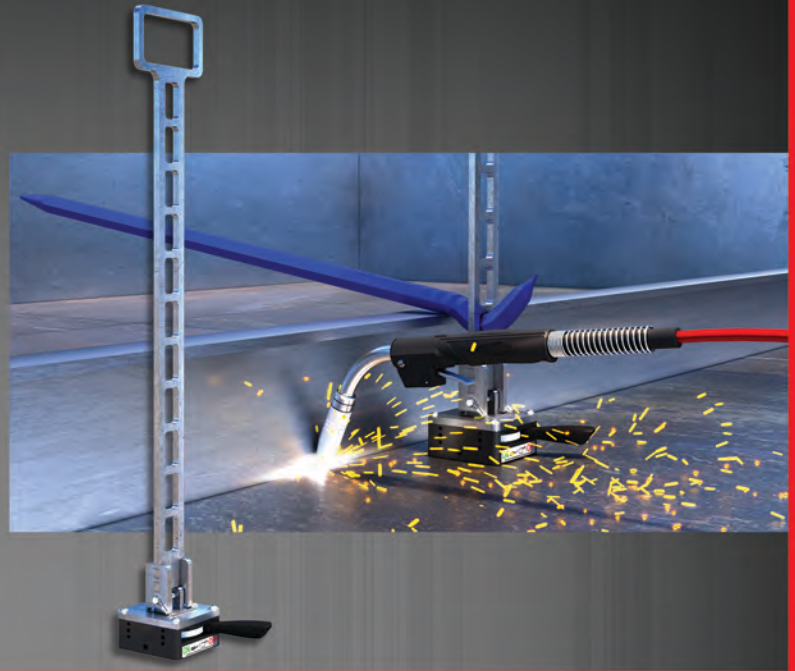
PART: TMA

No-MAR® Ladder Jak

Designed to help eliminate air gaps for tacking stiffeners, baffles, or frames. The 31" ladder has 2-1/2" rung spacing to accommodate a wide range of applications. The included XBAM-1500 magnet has a holding force of up to 1,500 lbs and breakaway capacity of >1,320 lbs on 3/8" steel. Features an easy to carry "D" handle. Can be used in conjunction with our Fit Up Bars.

Weight: 24.5 lbs

PART: LJ300



Video Demonstration:
fitupgear.com/no-mar-products/no-mar-ladder-jak

No-MAR® Trim Bar

Magnetic straight edge for torch cutting. 2 - 150 lb durable, switchable magnets hold it in any position to assure a clean professional cut. Available in 24", 36" and 72" models.

24" Model
PART: TB-2
Weight: 3.5 lbs

36" Model
PART: TB-3
Weight: 4 lbs

72" Model
PART: TB-6
Weight: 7 lbs



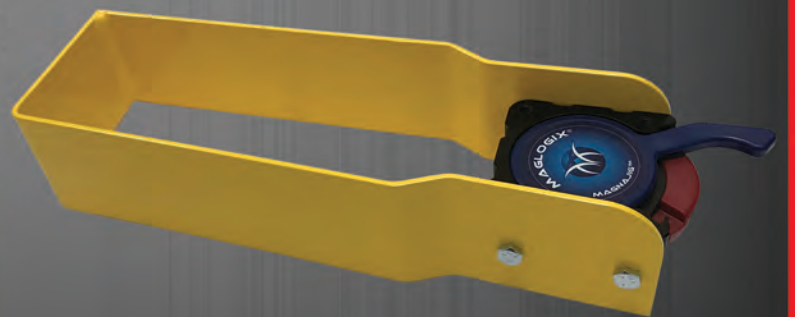
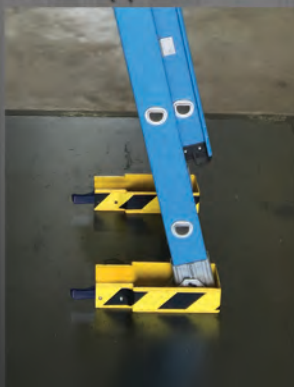
No-MAR® Ladder Sentry

This magnetic attachment secures the foot of your ladder to the deck or floor of any ferrous structure. Eliminates scars from welded on stops. Each Ladder Sentry will accommodate the safety foot of a 1A or 1AA ladder. Each magnet supports 220 pounds.

Sold in pairs providing 440 lbs total support.

Weight: 8.6 lbs

PART: LS-100



The ultimate magnets with hundreds of uses

PART: XBAM-150
2.0" long X 2.77" W (incl. handle) X 1.0" H
Weight: .61 lbs

PART: XBAM-500
3.12" long X 5.1" W (incl. handle) X 1.65" H
Weight: 2.25 lbs



XBAM-150

XBAM-500

NO-MAR® XBAM-150 and XBAM-500 MAGNETS

- Up to 150 lbs. (XBAM-150) or 500 lbs. (XBAM-500) of holding force even on .125" plate steel (breakaway)
- Incredibly lightweight and easy to handle
- Easy actuation for rapid on/off control. Handle locks on for safety—push red button down to release handle
- Tapped holes on three sides and the top for attachment of accessories (XBAM-150 8-32 holes / XBAM-500 1/4-20 holes)
- Incredible shear force holding power for greater grip in vertical applications
- Ideal for plate leveling, platform building, fixturing, and work holding of all types
- Ultra-compact magnetic field allows for welding as close as .5" (max. temperature 176° F)

The ultimate magnets with hundreds of uses

PART: XBAM-750
3.15" long X 4.5" W (incl. handle) X 1.28" H
Weight: 2.44 lbs

PART: XBAM-750R (for use on round steel)
3.15" long X 4.5" W (incl. handle) X 1.28" H
Weight: 2.44 lbs

PART: XBAM-1500
4.15" long X 7.3" W (incl. handle) X 1.8" H
Weight: 5.25 lbs
Also works on round steel



XBAM-750

XBAM-1500

NO-MAR® XBAM-750 and XBAM-1500 MAGNETS

- Up to 750 lbs. (XBAM-750) or 1,500 lbs. (XBAM-1500) of holding force even on .25" plate steel (breakaway)
- Incredibly lightweight and easy to handle
- Easy actuation for rapid on/off control. Handle locks on for safety—lift the handle up to release
- M5 tapped holes on two sides and M6 on the top for attachment of user designed accessories
- Incredible shear force holding power for greater grip in vertical applications
- Hardened steel base with TiN coating for long lasting flatness and fewer airgaps caused by damage to the base
- Ideal for plate leveling, platform building, fixturing, and work holding of all types
- Ultra-compact magnetic field allows for welding as close as .5" (max. temperature 176° F)

- Hand lift up to 70 lbs
- Incredibly lightweight and easy to handle
- Easy actuation for rapid on/off control. Handle locks on for safety. Slightly lift handle up to release
- Hardened steel base with TiN coating for long lasting flatness and fewer air gaps caused by damage to the base



NO-MAR® XBAM-HL-750V HAND LIFTER MAGNET

- OSHA friendly 10:1 safe working load when used at the maximum single person lift of 70lbs
- Saves hands and fingers from contacting hot and sharp steel (176° F max.)
- Invaluable for removing parts off of a plasma cutter

Weight: 3.45 lbs

PART: XBAM-HL-750V

Video Demonstration:
fitupgear.com/no-mar-products/no-mar-maglogix-magnet-hand-lifter

NO-MAR® XBAM-L-220 **LIFTING MAGNET**

- Maximum lifting capacity of 110 lbs on .12" thick material and 220 lbs on .25" thick material (at safety factor 1:3)
- Outstanding performance on thin walled materials (applicable from 1mm material)
- 360° rotating and swiveling hook
- 750 lb breakaway (from .25" thick material)
- Maximum vertical lifting capacity of 66 lbs at 90°

3.15" long X 4.5" wide (including handle) X 3.35" high (lifting hook down) / 5.8" high (lifting hook up)

Weight: 3.9 lbs

PART: XBAM-L-220



NO-MAR® Lifting Magnets

Permanent lifting magnets

- Outstanding performance on thin walled materials
- 70% less weight than standard lifting magnets
- Effortless and ergonomic lever activation of magnet
- 360° rotating lifting hook
- TiN coated, hardened steel magnetic surface

PART: XBAM-L-500
9.5" long X 3.5" wide X 7.75" high
Max Load: 550 lbs
Weight: 8 lbs

PART: XBAM-L-1000
11.5" long X 3.75" wide X 8" high
Max Load: 1,100 lbs
Weight: 14.5 lbs



NO-MAR® Lifting Magnets **THE BEAST**

Permanent lifting magnet

- Outstanding performance on thin walled materials
- 70% less weight than standard lifting magnets
- Effortless and ergonomic lever activation of magnet
- 360° rotating lifting hook
- TiN coated, hardened steel magnetic surface

PART: XBAM-L-2200
18.5" long X 7.6875" wide X 13.1875" high in off position
Max Load: 2,200 lbs on .5" / 1630 lbs on .25"
Weight: 39.4 lbs





150 lb Breakaway Magnetic Square

- Max Hold: 150 lbs on Flat Steel | 75 lbs on Round Steel | Min Diameter: 1-1/2"
- Overall Height: 2-3/4" | 1-1/8" H x 1-1/2" W x 1-1/2" L
- Tap: #8-20 | Tap Depth: .330

PART: SQ150IM

Weight: 0.80 lbs



450 lb Breakaway Magnetic Square

- Max Hold: 450 lbs on Flat Steel | 225 lbs on Round Steel | Min Diameter: 2"
- Overall Height: 4-5/8" | 2-3/4" H x 2-1/2" W x 3" L
- Tap: 1/4-20 | Tap Depth: .500

PART: SQ450IM

Weight: 4.30 lbs



1,000 lb Breakaway Magnetic Square

- Max Hold: 1,000 lbs on Flat Steel | 500 lbs on Round Steel | Min Diameter: 4"
- Overall Height: 4-3/4" | 3" H x 4" W x 4-1/4" L
- Tap: 3/8-16 | Tap Depth: .625

PART: SQ1000IM

Weight: 10.45 lbs

Need more holding strength? Purchase an XBAM-L-1000 or XBAM-L-500 magnet and place it perpendicularly at the back of the Magnet Wedge Block.



Video Demonstration:

fitupgear.com/no-mar-products/no-mar-magnet-wedge-block PART: XBAM-MWB-1000

NO-MAR® SWITCHABLE MAGNETIC SQUARES

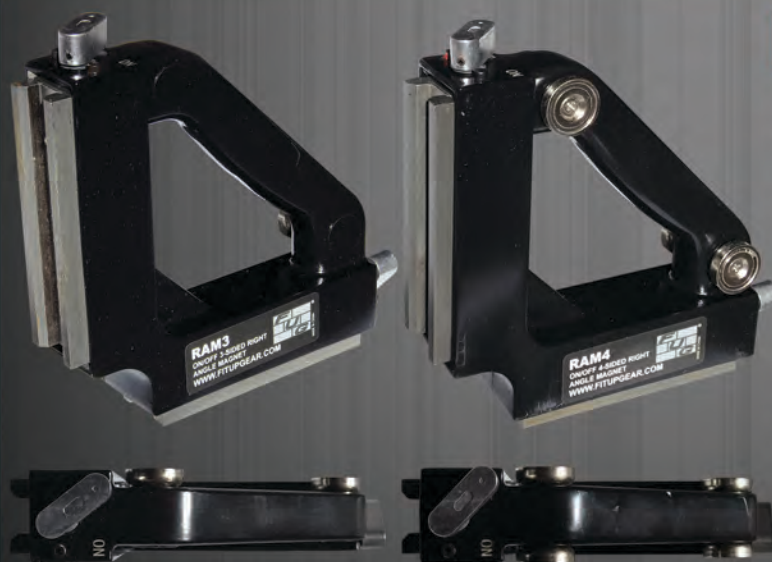
Switchable permanent rare earth Magnetic Squares are extremely powerful and eliminate the need for tedious clamping. The Magnetic Squares offer fast workholding on multiple sides for flat or round steel. Features pre-tapped holes on all sides for mounting and a locking On/Off handle for safety.

NO-MAR® MAGNET WEDGE BLOCK

Using our powerful XBAM-L-1000 permanent lifting magnet and an industrial grade plastic protective block, wedging on ferrous surfaces is quicker and easier than ever.

Simply place magnet on ferrous surface at angle of wedge, turn magnet on, then hammer wedge until object being pushed is in desired position. Wide variety of uses including: wedging plate, stiffeners, beams, equipment and much more into place.

Weight: 14.76 lbs



NO-MAR® RAM 3 & RAM 4

Right angle magnets for holding steel workpieces at 90°. Switchable magnets with 275 lb breakaway on main contact sides plus non-switchable auxiliary magnets flanking the handle (auxiliary magnets one side for RAM 3 – both sides for RAM 4).

RAM 3 - Auxiliary magnets on one side

Weight: 6 lbs

PART: RAM3

RAM 4 - Auxiliary magnets on both sides

Weight: 6 lbs

PART: RAM4

No-MAR® 4"x5" Right Angle Magnets

90° magnetic right angle for fast and easy way to secure steel sheets, angles and Ts for fillet welds and fabrication. 2 magnets with locking handles for safety. 4"x5" design allows for quick attachment to shorter components.

750 lbs Breakaway Magnets

PART: RA45-750

Weight: 7 lbs

500 lbs Breakaway Magnets

PART: RA45-500

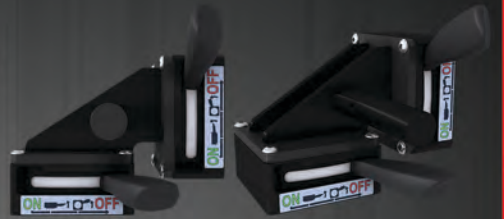
Weight: 7 lbs

150 lbs Breakaway Magnets

PART: RA45-150

Weight: 2.5 lbs

RA45-750



RA45-500



RA45-150



No-MAR® Right Angle 750s

90° magnetic right angle for fast and easy way to secure steel sheets for fillet welds and fabrication. These Right Angles feature 2 - 750 lbs breakaway magnets with locking handles for safety.

6"x8" Design

PART: RA68-750

Weight: 7 lbs

10"x12" Design

PART: RA1012-750

Weight: 9 lbs



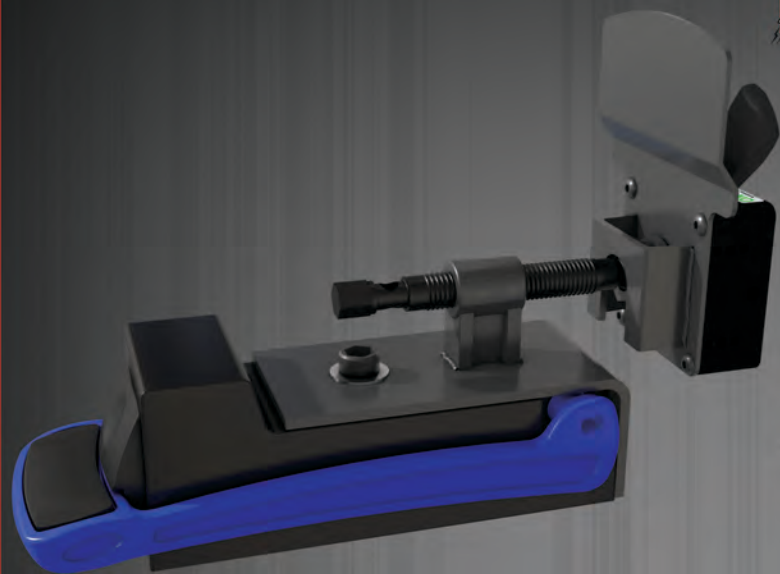
No-MAR® XBAM-VA-750 VARIABLE ANGLE MAGNET

- Dual XBAM-750 magnets with 750lb breakaway strength on as thin as .25" material
- Stepless adjustable angle side plates from 0° to 90° to hold/weld worksheets at different angles
- Lightweight and easy to handle
- Padded carrying case included

6.4" long X 4.9" wide X 8.8" high
Weight: 6 lbs (8.3 lbs with carrying case)

PART: XBAM-VA-750





No-MAR® Mag Push-Pull

Using an XBAM-L-1000 850 lb sheer hold magnet and an XBAM-1500 1,500 lb breakaway magnet, this combined unit can both push and pull ferrous structures to align, straighten or flatten into the desired position.

PART: FUGX-H-1-AS-2 (large magnet)

Weight: 16 lbs

PART: FUGX-TRK (small magnet)

Weight: 6 lbs

Video Demonstration:
fitupgear.com/no-mar-products/no-mar-mag-push-pull



No-MAR® Bigfoot

Used for material leveling and alignment also known as mismatch or high/low. The Bigfoot is built to maximize point loading of the magnets and create equal loads on each end with single knob control. Numerous designs tested to failure before final design was consistently achieving 2,500 lbs. of force. Can also be used with impact tools.

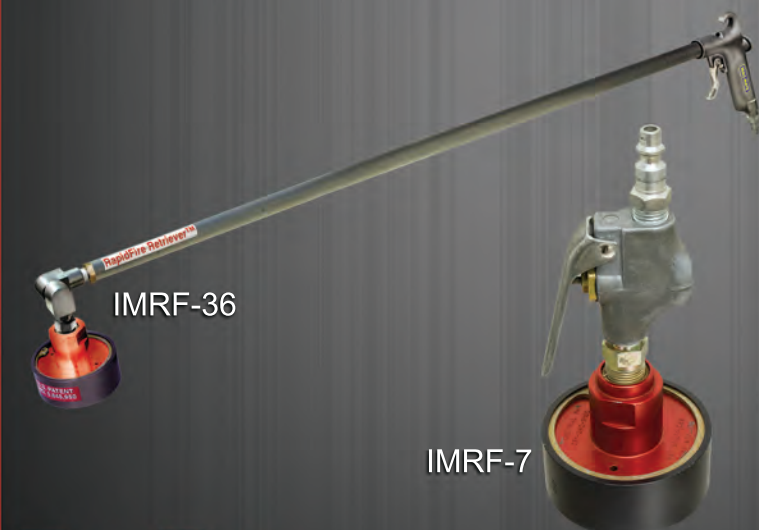
Features:

- 2 XBAM-L-1000 1,100 lb magnets
- Pivoting assembly centers load for maximum press
- Effortless and ergonomic lever activation of magnet
- TiN coated, hardened steel magnetic surface

Weight: 51 lbs

PART: BF-2500

Video Demonstration:
fitupgear.com/no-mar-products/no-mar-bigfoot



No-MAR® RapidFire Retriever®

Features:

- Retrieve hot parts off cutting tables with speed and precision
- Increase production while reducing the potential for injury
- Powerful Rare Earth Magnet holds part securely - lifts 35 lbs (15.8 kg)
- Release with just a quick blast of shop air
- Actuate release with just one finger, it's as simple as the pull of a trigger

PART: IMRF-7 - Length: 7" - Weight: 0.80 lbs

PART: IMRF-24 - Length: 24" - Weight: 2.10 lbs

PART: IMRF-36 - Length: 36" - Weight: 2.30 lbs

PART: IMRF-48 - Length: 48" - Weight: 2.50 lbs

NO-MAR® Magnetic Drill Press

Make any metal collared drill a mini drill press with switchable magnetic base.

Add your own corded or cordless drill to make an affordable, portable and versatile drill press. Drill at a 90° angle and with greater safety than hand-holding.

This drill base holds securely:

- On thick steel
- On thin steel (down to .080")
- On angle iron
- With limited contact
- Without a power cord
- While working overhead

Weight: 15 lbs

PART: PMBD-35



Tool opening for drill is 43mm. Tapered drill collars will work, but can prevent use upside down. Drill not included.

NO-MAR® Mag Drills

Metal core drilling machines that feature an ultra-powerful switchable permanent magnet with pre-tension, ergonomic operation, use from just 3 mm, PCB with hybrid relays, LED indicator for magnet adhesive force display, temperature sensor, and quick-change arbor.

PART: MBD-35

Cutter Dimension - Ø 12.0 - 35.0 mm

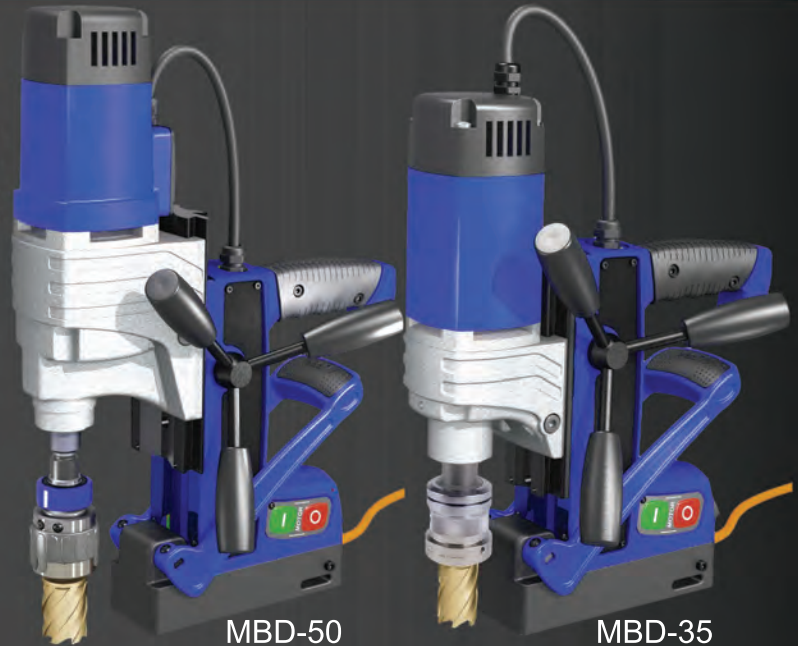
Weight: 21.8 lbs

PART: MBD-50

Cutter Dimension - Ø 12.0 - 50.0 mm

2-Speed Gearbox

Weight: 25.4 lbs



MBD-50

MBD-35

More info at: fitupgear.com/no-mar-products/no-mar-mag-drill

NO-MAR® Mag Hook

Non-conductive 220 lb capacity 12" plastic "S" hook with Fit Up Gear's XBAM-500, a 500 lb breakaway magnet. Perfect for housekeeping and cable and hose management.

Weight: 2.9 lbs

PART: MSH-220

Plastic "S" Hook

The plastic "S" hook can also be purchased separately.

Weight: .65 lbs

PART: SH-12-220



NO-MAR



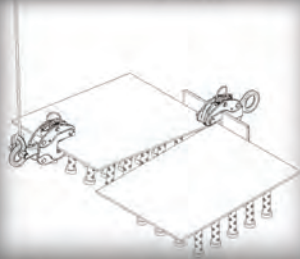
*National
Clamp*

www.fitupgear.com/national-clamp-products

HOLDING CLAMPS AND HOOKS



NVC-HW Setting Clamp



- Clamp for setting ends of two steel plates straight when assembling
- Efficient clamp with bolts positioned on the right and left sides of the jaw to hold plate tightly
- Fixing piece not needed with this clamp
- Different lengths of steel can be adjusted
- Rated at 1 ton

Weight: 23.2 lbs

PART: NVC-HW1

NPC-A Screw Clamp



- A means of placing a temporary attachment for pulling or pushing in the fitting process
- Versions available in the following tonnage ratings: 1, 1.5, 2, 3 and 5

Weight: 1 Ton - 5 lbs | 1.5 Ton - 5.7 lbs | 2 Ton - 7 lbs
3 Ton - 10.1 lbs | 5 Ton - 23.4 lbs

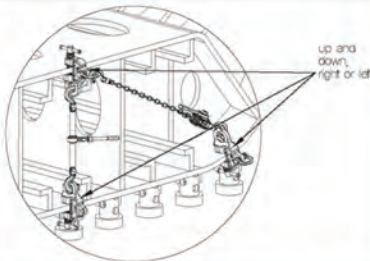
PART: 1 Ton - NPC-A1 | 1.5 Ton - NPC-A1.5
2 Ton - NPC-A2 | 3 Ton - NPC-A3 | 5 Ton - NPC-A5

See page 40 of catalog for warnings, maintenance, and repair of all Screw Clamps.

SPECIFICATION

MODEL	WELL TON	WELL OPENING	A	B	C	D	E	F	ØG	H	I	ØJ	K	WT LB
NPC-A	1	0-25	32	30	156	25	25	98	38	17	50	25	40	2.3
	1.5	0-25	35	32	166	25	25	98	38	18	55	28	45	2.6
	2	0-30	40	35	182	25	25	100	40	20	60	30	50	3.2
	3	0-35	58	38	205	30	38	116	42	22	65	36	60	4.6
	5	0-50	65	52	265	35	50	132	55	28	80	40	70	10.6

NPC-T Screw Clamp



- A means of placing a temporary attachment for pulling or pushing in the fitting process
- Up and down straight operation and right or left using the small eye hole
- Versions available in the following tonnage ratings: 1.5, 3 and 5

Weight: 1.5 Ton - 6.2 lbs | 3 Ton - 9.9 lbs
5 Ton - 25.1 lbs

PART: 1.5 Ton - NPC-T1.5 | 3 Ton - NPC-T3
5 Ton - NPC-T5

See page 40 of catalog for warnings, maintenance, and repair of all Screw Clamps.

SPECIFICATION

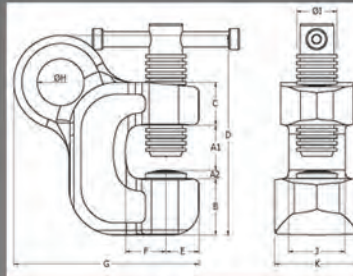
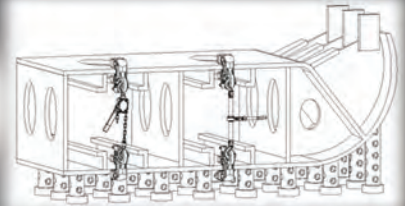
MODEL	WELL TON	WELL OPENING	A	B	C	D	E	ØF	G	H	ØI	WT LB
NPC-T	1.5	0-25	30	30	165	50	135	40	18	55	28	2.8
	3	0-35	40	34	198	60	160	42	20	65	30	4.5
	5	0-50	55	50	264	90	218	55	28	80	40	11.4

NPC-Z Screw Clamp

- A means of placing a temporary attachment for pulling or pushing in the fitting process
- Screw is next to eye hook in top of clamp for easy bite of upper and lower work pieces
- Rated at 1.5 ton

Weight: 7.7 lbs

PART: NPC-Z1.5



SPECIFICATION

MODEL	WLL TON	SW OPENING	A1	A2	B	C	D	E	F	G	H	I	J	K	WT LBS
NPC-Z	1.5	0-25	33	8	42	33	158	28	30	148	38	30	55	60	3.5

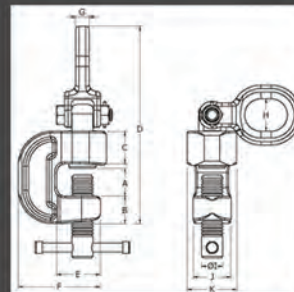
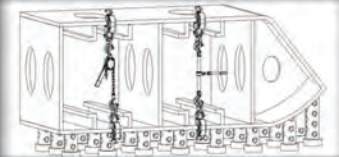
See page 40 of catalog for warnings, maintenance, and repair of all Screw Clamps.

NPC-DB Screw Clamp

- A means of placing a temporary attachment for pulling or pushing in the fitting process
- Upper eye hook rotates 360° making operation in all directions possible
- Versions available in the following tonnage ratings: 1.5, 2, 3 and 5

Weight: 1.5 Ton - 7.3 lbs | 2 Ton - 9.5 lbs
3 Ton - 13.5 lbs | 5 Ton - 30.4 lbs

PART: 1.5 Ton - NPC-DB1.5 | 2 Ton - NPC-DB2
3 Ton - NPC-DB3 | 5 Ton - NPC-DB5



SPECIFICATION

MODEL	WLL TON	SW OPENING	A	B	C	D	E	F	G	H	I	J	K	WT LBS
NPC-DB	1.5	0-25	30	34	40	235	50	104	16	35	28	44	58	3.3
	2	0-30	35	36	45	255	57	110	18	40	30	48	62	4.3
	3	0-35	40	40	48	280	70	130	20	45	34	56	70	6.1
	5	0-50	58	52	60	278	90	155	30	55	40	70	84	13.8

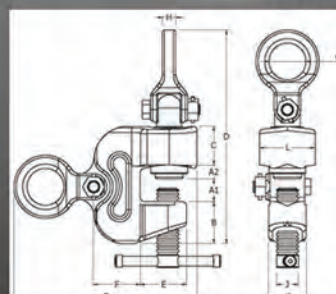
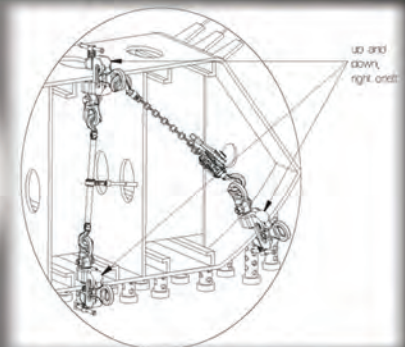
See page 40 of catalog for warnings, maintenance, and repair of all Screw Clamps.

NPC-NT Screw Clamp

- A means of placing a temporary attachment for pulling or pushing in the fitting process
- Upper eye hook rotates 360° making operation in all directions possible
- Versions available in the following tonnage ratings: 1.5 and 3

Weight: 1.5 Ton - 11 lbs | 3 Ton - 18.7 lbs

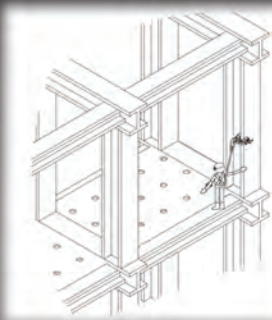
PART: 1.5 Ton - NPC-NT1.5 | 3 Ton - NPC-NT3



SPECIFICATION

MODEL	WELL TON	SW OPENING	A1	A2	B	C	D	E	F	G	H	I	J	K	L	WT KG
NPC-NT	1.5	0-25	30	14	43	45	235	62	44	210	16	35	25	45	64	5.0
	3	0-35	40	14	46	52	282	68	53	240	20	45	30	57	80	8.5

See page 40 of catalog for warnings, maintenance, and repair of all Screw Clamps.



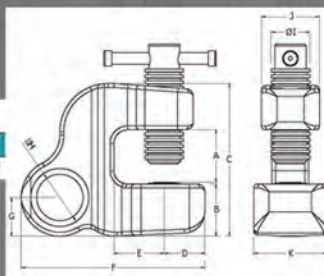
NPC-SB Anchorage Connector

- Anchorage Connector clamp used to prevent personnel, tools or material from falling
- When there is no place to hang a safety harness hook
- Holds 310 lbs

Weight: 1.5 lbs

PART: NPC-SB200

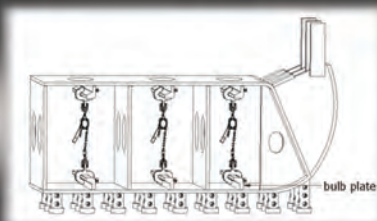
**COMING
SOON**



SPECIFICATION

MODEL	W/LA TONS	SW OPENING	A	B	C	D	E	F	G	SH	DI	J	K	W/L LBS
NPC-SB	0.2	0-20	22	25	77	22	27	95	20	23	20	30	38	0.7

Going through certification process and will be available soon



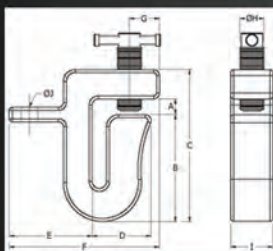
NPC-FS Screw Clamp

- A means of placing a temporary attachment for pulling or pushing in the fitting process
- Clamp jaw opening designed for use on flat steel used as frame material for outer plating and inner bottom plates

- Rated at 5 tons

Weight: 37.3 lbs

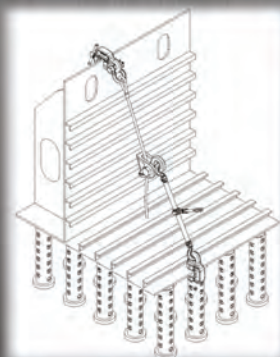
PART: NPC-FS5



SPECIFICATION

MODEL	W/LA TONS	SW OPENING	A	B	C	D	E	F	G	SH	I	W/L LBS
NPC-FS	5	0-25	28	178	254	97	90	248	35	38	70	16.9

See page 40 of catalog for warnings, maintenance, and repair of all Screw Clamps.



NWR Wire Clamp

- Used to fix tall blocks such as outside plating and ship frames with wire rope
- Freely adjust the length of the rope with only one end secured
- Pass wire rope through clip, set length of rope, then fix rope with ratchet puller
- Rated at 3 tons

Weight: 8.2 lbs

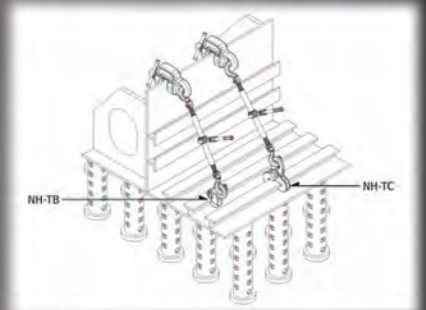
PART: NWR3

NH-TB Pulling Hook

- Used where T-section flanges are too narrow for screw clamps
- A means of placing a temporary attachment for pulling or pushing in the fitting process
- Have hook bite flange of T-section steel
- Rated at 1.5 ton

Weight: 3.8 lbs

PART: NH-TB1.5

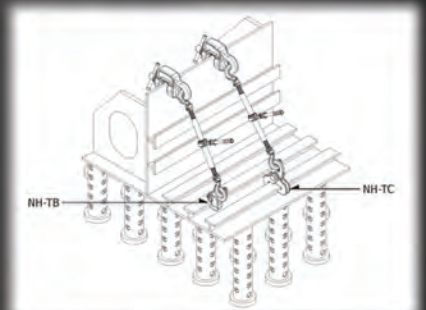


NH-TC Pulling Hook

- Used where T-section flanges are too narrow for screw clamps
- A means of placing a temporary attachment for pulling or pushing in the fitting process
- Have hook bite flanges of T-section steel
- Rated at 1.5 ton

Weight: 6.6 lbs

PART: NH-TC1.5

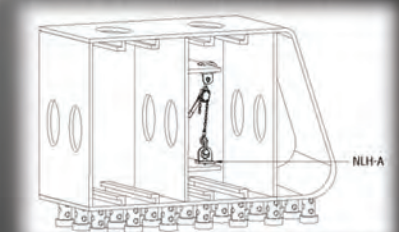


NLH-A Pulling Hook

- Used on materials that should not have teeth marks
- Incorporates a screw to prevent slippage of work pieces
- Insert work pieces into the end of the hook's jaw opening
- Rated at 2 tons

Weight: 7.1 lbs

PART: NLH-A2

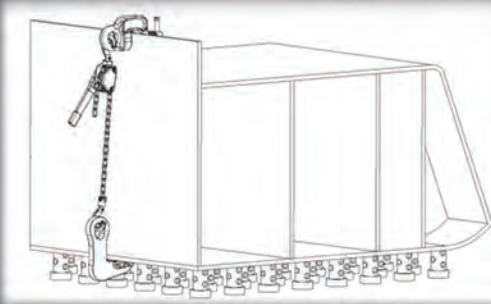


NHG-NE Pulling Hook

- Used as a hook of a lever block in making a tank of a ship or plant
- Pads attached to bottom of hook prevent slippage
- Use where you cannot hang a hook or use screw clamps when building square boxes
- Rated at 2 tons

Weight: 9.7 lbs

PART: NHG-NE2

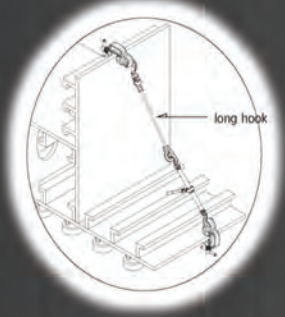


NH-AB Long Hook

- Long hook for hanging a hook of a long and tall lever block
- Hook can rotate 45° right and left
- Hang the clevis hook on a high area
- Rated at 3 tons
- Versions available in the following lengths: 1m, 1.5m, 2m, 3m and 4m

Weight: 1m - 11 lbs | 1.5m - 14 lbs | 2m - 17lbs
3m - 21 lbs | 4m - 25 lbs

PART: 1m - NH-AB1 | 1.5m - NH-AB1.5
2m - NH-AB2 | 3m - NH-AB3 | 4m - NH-AB4



NH-D Short Hook

- For hanging a hook of a lever block when attaching ships and steel structures
- Hook can rotate 90° right and left from middle of hook
- Hang hook on eye piece hole of a surface plate pin jig when assembling bottom or outer plating blocks
- Versions available in the following tonnage ratings: 2 and 3

Weight: 2 Ton - 5.5 lbs | 3 Ton - 7.3 lbs

PART: 2 Ton - NH-D2 | 3 Ton - NH-D3



NH-CC Chain and Hook

- Versions available in the following tonnage ratings: 1.5 and 3
- Can be used in conjunction with NRP-A or NRP-C Ratchet Pullers

Weight: 1.5 Ton - 6 lbs | 3 Ton - 11 lbs

PART: 1.5 Ton - NH-CC1.5 | 3 Ton - NH-CC3

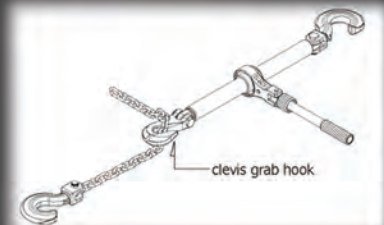


NH-C Chain and Hook

- Versions available in the following tonnage ratings: 1.5 and 3
- Can be used in conjunction with NRP-B Ratchet Puller

Weight: 1.5 Ton - 5 lbs | 3 Ton - 8 lbs

PART: 1.5 Ton - NH-C1.5 | 3 Ton - NH-C3



NRP-A Ratchet Puller

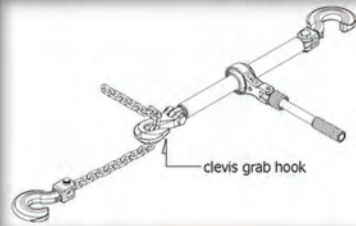
- For pulling or fixing a block for ships or steel structure manufacturing
- Faster and more convenient than turnbuckles
- Folding handle for easy transport and use
- Have screw clamps bite both ends of a steel structure, insert hook into eye, set stopper to "IN" and operate handle
- Versions available in the following tonnage ratings: 1.5 and 3

Weight: 1.5 Ton - 13.7 lbs | 3 Ton - 19.4 lbs

PART: 1.5 Ton - NRP-A1.5 | 3 Ton - NRP-A3



NRP-B Ratchet Puller

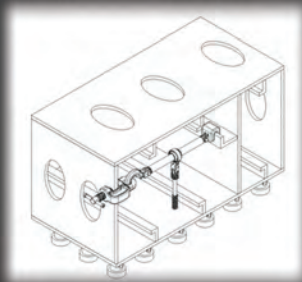


- For pulling or fixing a block for ships or steel structure manufacturing
- Faster and more convenient than turnbuckles
- Folding handle for easy transport and use
- Have screw clamps bite both ends of a steel structure, insert hook into eye, set stopper to "IN" and operate handle
- Versions available in the following tonnage ratings: 1.5 and 3

Weight: 1.5 Ton - 12.6 lbs | 3 Ton - 17.9 lbs

PART: 1.5 Ton - NRP-B1.5 | 3 Ton - NRP-B3

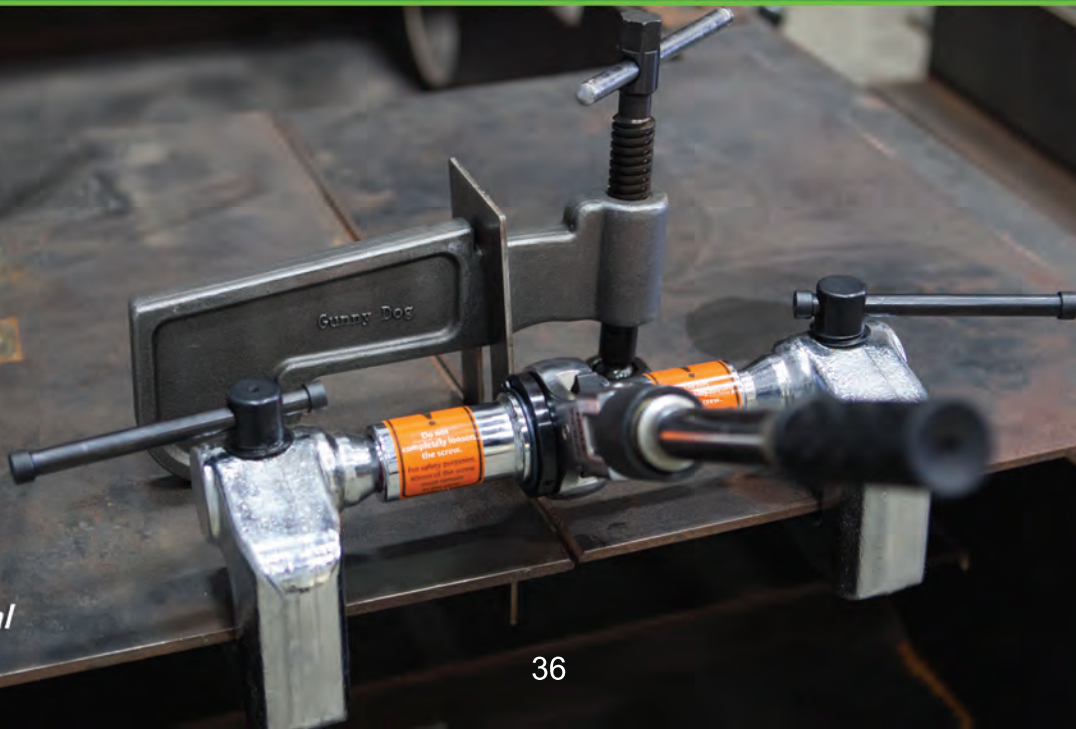
NRP-C Ratchet Puller



- For pulling or fixing a block for ships or steel structure manufacturing
- Faster and more convenient than existing turnbuckles
- Special hooks for thickness of work pieces
- Folding handle for easy transport and use
- Hang the hook on steel structures to be pulled or fixed, set stopper to "IN" and operate handle
- Rated at 1.5 tons

Weight: 18.5 lbs

PART: NRP-C1.5

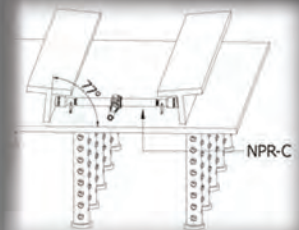


NPR-C Ratchet Pusher

- Used for adjusting the interval of side frames
- Pads rotate 13° and have teeth to prevent slippage
- Operate handle after fixing ratchet inside a work piece to be pushed
- Versions available in the following tonnage ratings: 1.5 and 3

Weight: 1.5 Ton - 16 lbs | 3 Ton - 18.3 lbs

PART: 1.5 Ton - NPR-C1.5 | 3 Ton - NPR-C3

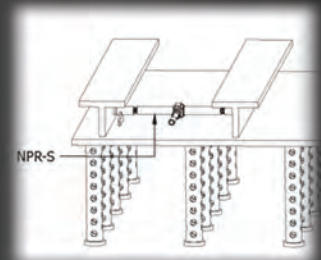


NPR-S Ratchet Pusher

- Used for adjusting the interval of side frames
- Elongates as handle is operated
- Support legs keep pusher horizontal
- Can support structures
- Versions available in the following tonnage ratings: 1.5, 3 and 5

Weight: 1.5 Ton - 15.4 lbs | 3 Ton - 19.4 lbs
5 Ton - 21.6 lbs

PART: 1.5 Ton - NPR-S1.5 | 3 Ton - NPR-S3
5 Ton - NPR-S5



Push/Pull Bar

- For pushing, pulling, or fixing a block for ships or steel structure manufacturing

- Rated at 3 tons

PART: NRC-W-3T-J30 (with lead screw)

Weight: 25 lbs

PART: NRC-R-3T-J30 (with ratchet)

Weight: 30 lbs





NPR-PA-1 Ratchet Pusher with Clamp

- For pushing or fixing stiffeners for ships or steel structure manufacturing

- Rated at 2 tons

Weight: 22 lbs

PART: NPR-PA-1 (one clamp)



NPR-PA-2 Ratchet Pusher / Puller with 2 Clamps

- For pulling, pushing, or fixing stiffeners for ships or steel structure manufacturing

- Push and pull to achieve the gap you need

- Rated at 2 tons

Weight: 29 lbs

PART: NPR-PA-2 (two clamps)

Video Demonstration:
fitupgear.com/national-clamp-products/national-clamp-npr-pa-2-ratchet-pusher-with-2-clamps



NPR-KB Ratchet Pusher with Magnets

- For pushing or fixing stiffeners for ships or steel structure manufacturing

- Rated at 1 ton

Weight: 12 lbs

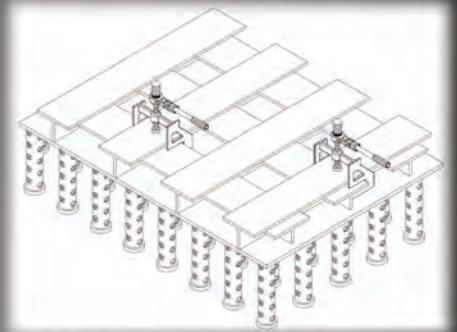
PART: NPR-KB

NPP-A Ratchet Press

- Used as an alternative to a jig when attaching L and T-section steel
- For work pieces with low sections and wide flanges
- Operate ratchet handle after inserting press jaw opening into end of section steel flange
- Has a swivel pad
- Custom sizes available
- Rated at 1.5 tons

Weight: 17.4 lbs

PART: NPP-A

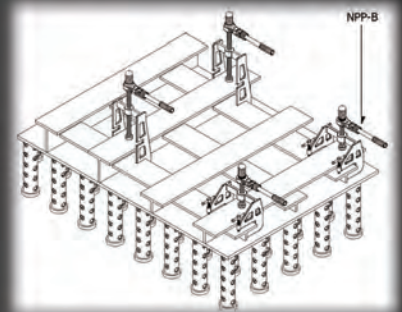


NPP-B Ratchet Press

- Used as an alternative to a jig when attaching L and T-section steel
- For work pieces with low sections and wide flanges
- Operate ratchet handle after inserting press jaw opening into end of section steel flange then fasten fixing bolts
- Has a swivel pad
- Custom sizes available
- Rated at 1.5 tons

Weight: 21.8 lbs

PART: NPP-B

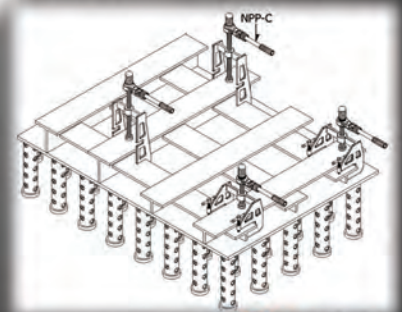


NPP-C Ratchet Press

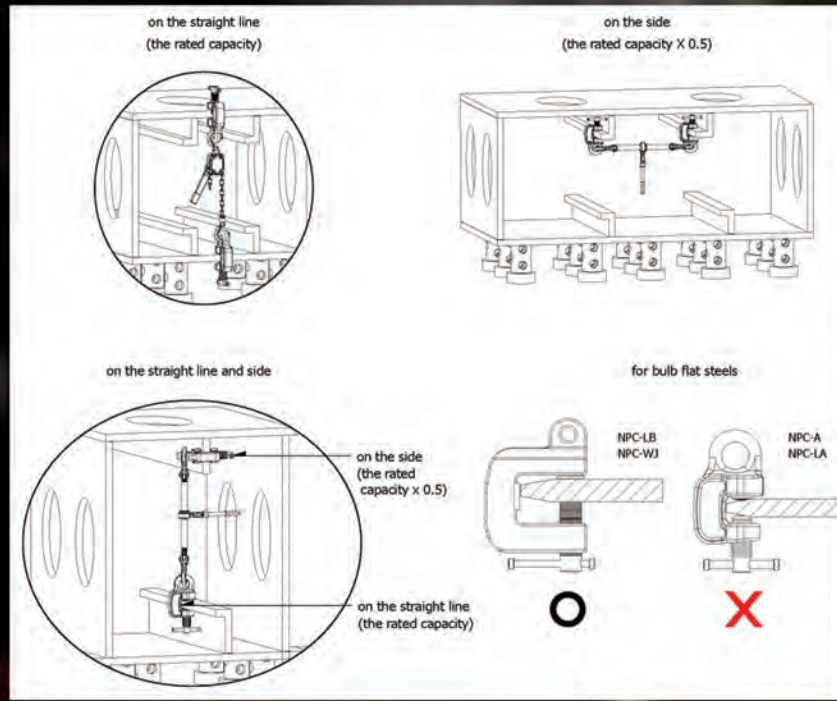
- Used as an alternative to a jig when attaching L and T-section steel
- For work pieces with low sections and wide flanges
- Operate ratchet handle after inserting press jaw opening into end of section steel flange
- Has a swivel pad
- Custom sizes available
- Rated at 1.5 tons

Weight: 18.7 lbs

PART: NPP-C



Safe and Proper Use of Screw Clamps



Warnings

- NEVER use Screw Clamps as a lifting device.
- NEVER make alterations to the clamps or clamp components for other uses
- NEVER heat up or weld on not only clamps but also components
- NEVER use as fall protection
- NEVER remove warning label from clamps
- The Working Load Limit (WLL) specified on the Screw Clamp is the load for one clamp. It is also a maximum load which clamps are designed to sustain in the straight line load condition. Horizontal or side pulls are rated at 75 percent of the WLL.
- Never use the clamps for other materials except steel.
- Do not use clamps on materials with a hardness greater than 300HB or less than 80HB which could cause a slip.
- Do not use clamps on materials whose surface temperature is greater than 300 degrees F or less than 0 degrees F.
- Always observe the rated capacity specified on the clamp.
- The thickness of the work piece must fall within the range of the jaw opening specified on the clamp or in the catalog specifications.
- When clamping, insert the work piece into the end of the clamp's jaw opening, make the swivel jaw horizontal to the work piece. Tightly fasten the screw. You are now ready to proceed with your fitting operation.
- Failure to comply with manufacturers warnings may result in severe personal injury or even death.
- For your safety and others around you always ask employer or manufacturer if it is safe to use tool in any questionable circumstance.

Maintenance

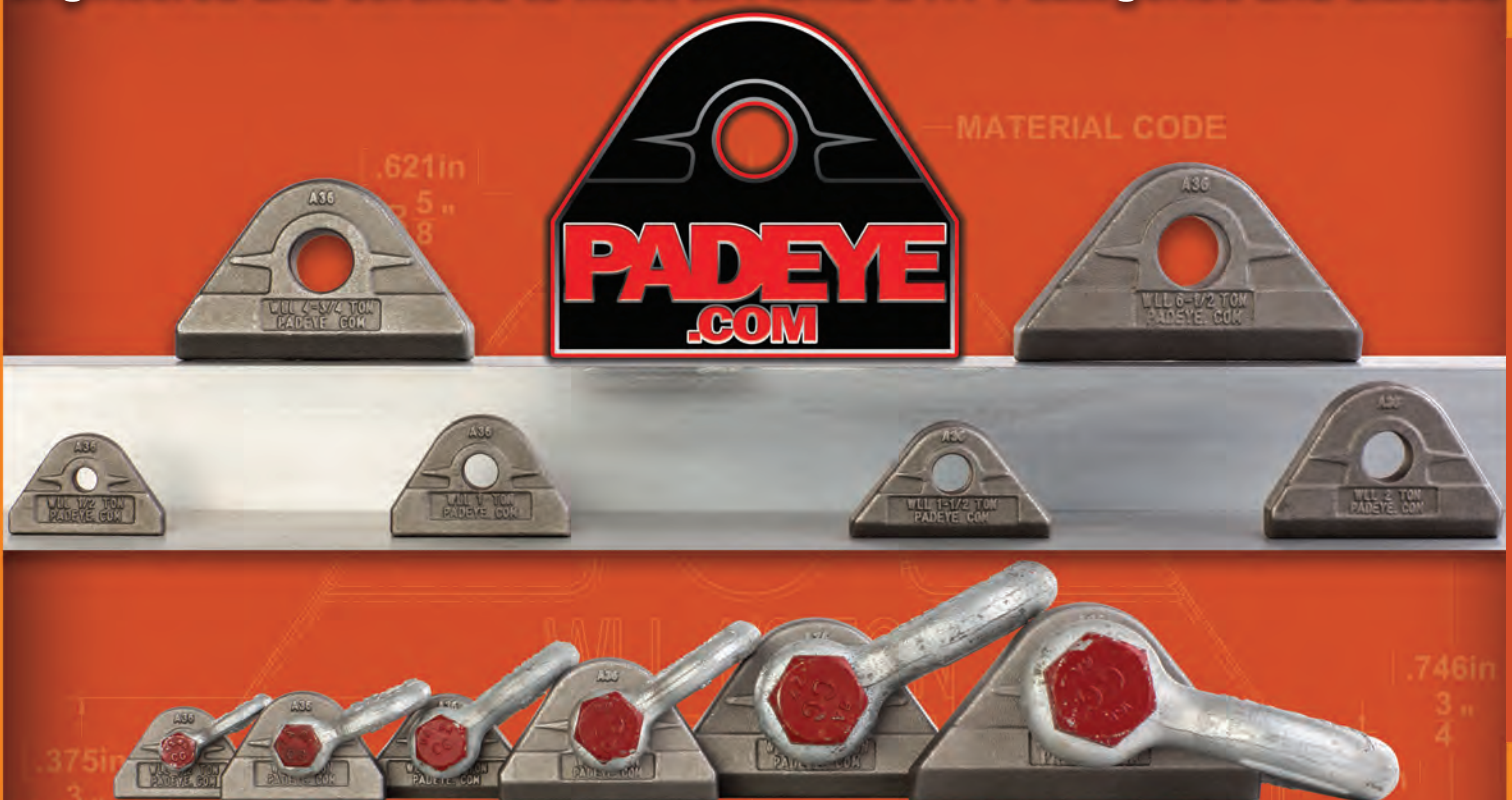
- Store Screw Clamps in a clean and dry location when not in use.
- Inspect the Screw Clamp for worn, damaged or missing parts prior the use.
- After inspection, grease the operating parts liberally.
- Conduct regular inspections of stored and in use clamps by maintenance personnel.
- Before use, always check clamps for any problem and then hand over them to users.

Repair

Repair of clamps should always be performed by qualified maintenance personnel in a designated tool repair shop.



One-time placement, weldable forged lifting padeyes that are engineered and certified to meet all ASME BTH-1 categories and classes

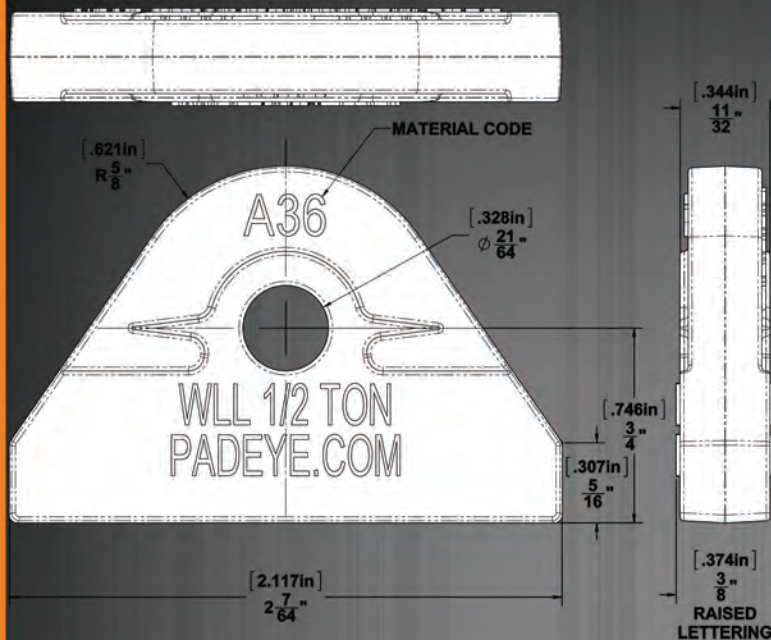


ADVANTAGES

- All Padeyes are forged to exacting tolerances. The forged hole is undersized and then a final reaming is done to exact tolerance.
- All batches are date coded and stamped into each part.
- Working load limit (WLL) is stamped into each part eliminating guesswork on capacity.
- Minimum weld deposit is stamped into each part according to AWS D1.1 or D14.1.
- Grade of material is stamped into each part.
- Built in gauge for minimum weld deposit stamped into each part.
- All of this is done to protect against mistakes. A quick visual inspection, then start your lift.
- A36 carbon and 316 stainless steel (other alloys available upon request)

www.padeye.com

CERTIFIED PADEYES



1/2 Ton Padeye

• Engineered and certified to meet all ASME BTH-1 categories and classes

• Rated at .5 ton

• A36 Carbon steel
(other alloys available)

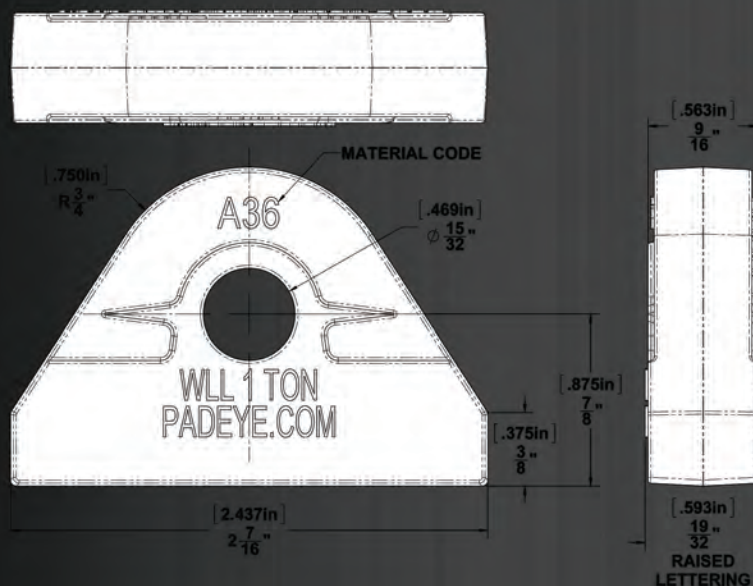
Weight: 3.2 ounces

PART: CSA

316 Stainless Steel Version

Weight: 3.1 ounces

PART: SSA



1 Ton Padeye

• Engineered and certified to meet all ASME BTH-1 categories and classes

• Rated at 1 ton

• A36 Carbon steel
(other alloys available)

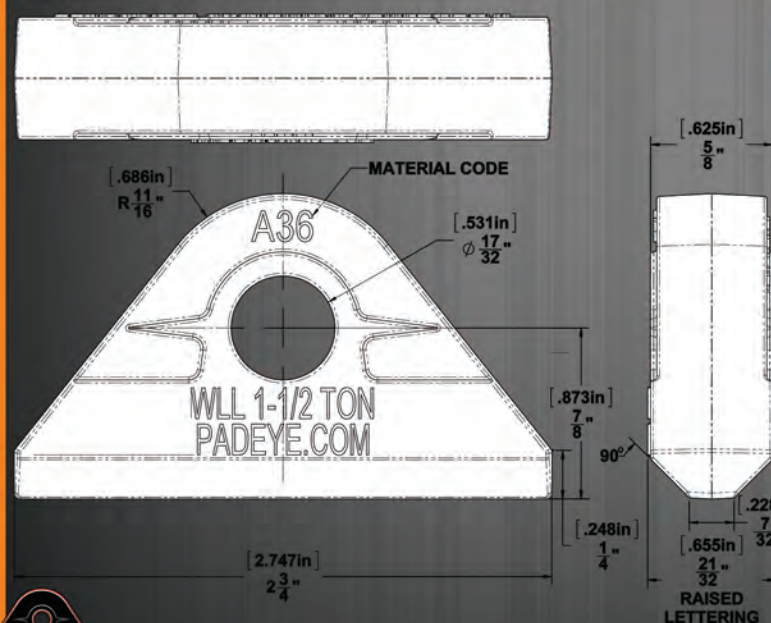
Weight: 6.9 ounces

PART: CSB

316 Stainless Steel Version

Weight: 6.8 ounces

PART: SSB



1-1/2 Ton Padeye

• Engineered and certified to meet all ASME BTH-1 categories and classes

• Rated at 1.5 tons

• A36 Carbon steel
(other alloys available)

Weight: 6.9 ounces

PART: CSC

316 Stainless Steel Version

Weight: 6.8 ounces

PART: SSC



2 Ton Padeye

- Engineered and certified to meet all ASME BTH-1 categories and classes
- Rated at 2 tons
- A36 Carbon steel (other alloys available)

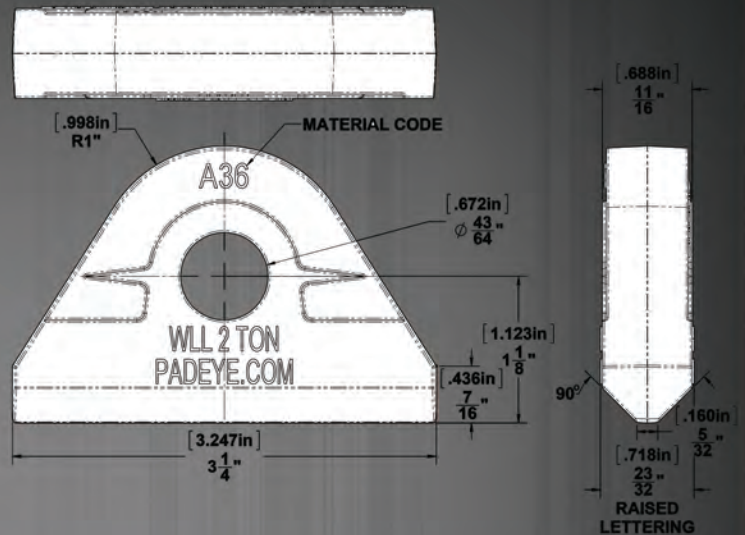
Weight: 13.2 ounces

PART: CSD

316 Stainless Steel Version

Weight: 13 ounces

PART: SSD



4-3/4 Ton Padeye

- Engineered and certified to meet all ASME BTH-1 categories and classes
- Rated at 4.75 tons
- A36 Carbon steel (other alloys available)

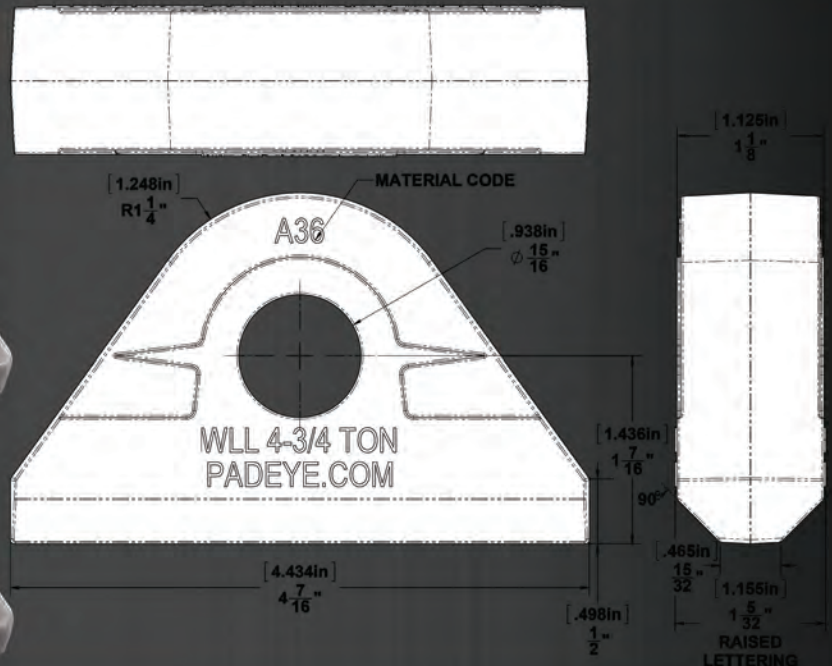
Weight: 2.19 lbs

PART: CSE

316 Stainless Steel Version

Weight: 2 lbs

PART: SSE



6-1/2 Ton Padeye

- Engineered and certified to meet all ASME BTH-1 categories and classes
- Rated at 6.5 tons
- A36 Carbon steel (other alloys available)

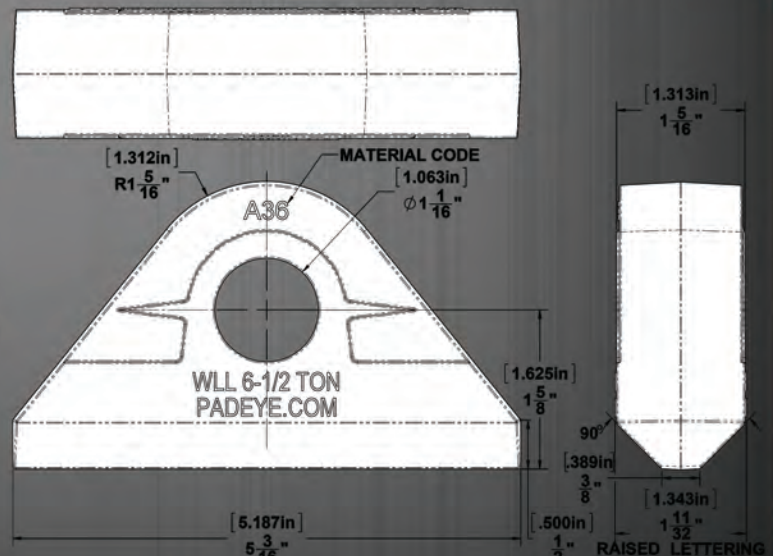
Weight: 3.125 lbs

PART: CSF

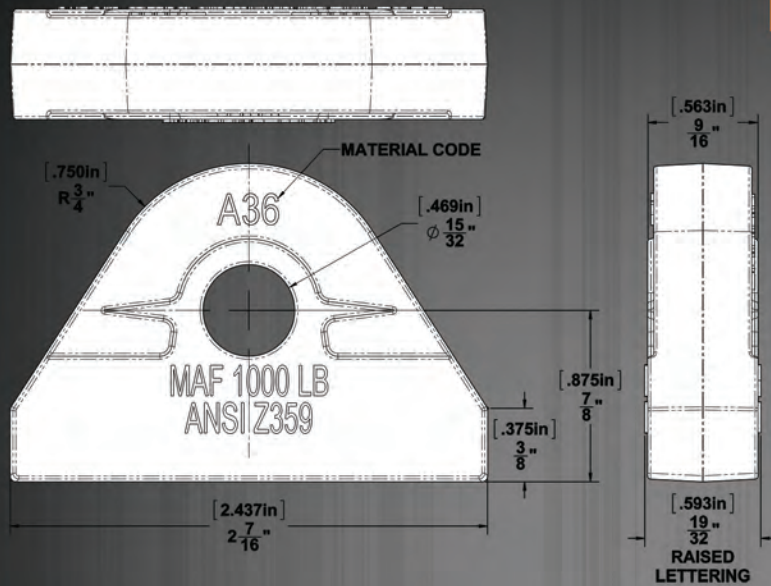
316 Stainless Steel Version

Weight: 3 lbs

PART: SSF



Personal Man Tie-Off Padeye



The single person Personal Man Tie-Off (PMTO) is designed in accordance with ANSI Z359 and may be used as a personal fall arrest system (PFAS) anchor point, fall restraint anchor or positioning anchor. The PMTO is used to prevent falling from heights in construction or general industry. The PMTO meets the Occupational Safety and Health Administration (OSHA) 29CFR 1926.502 load rating of up to a 310 pound person.

Weight: 6.9 ounces

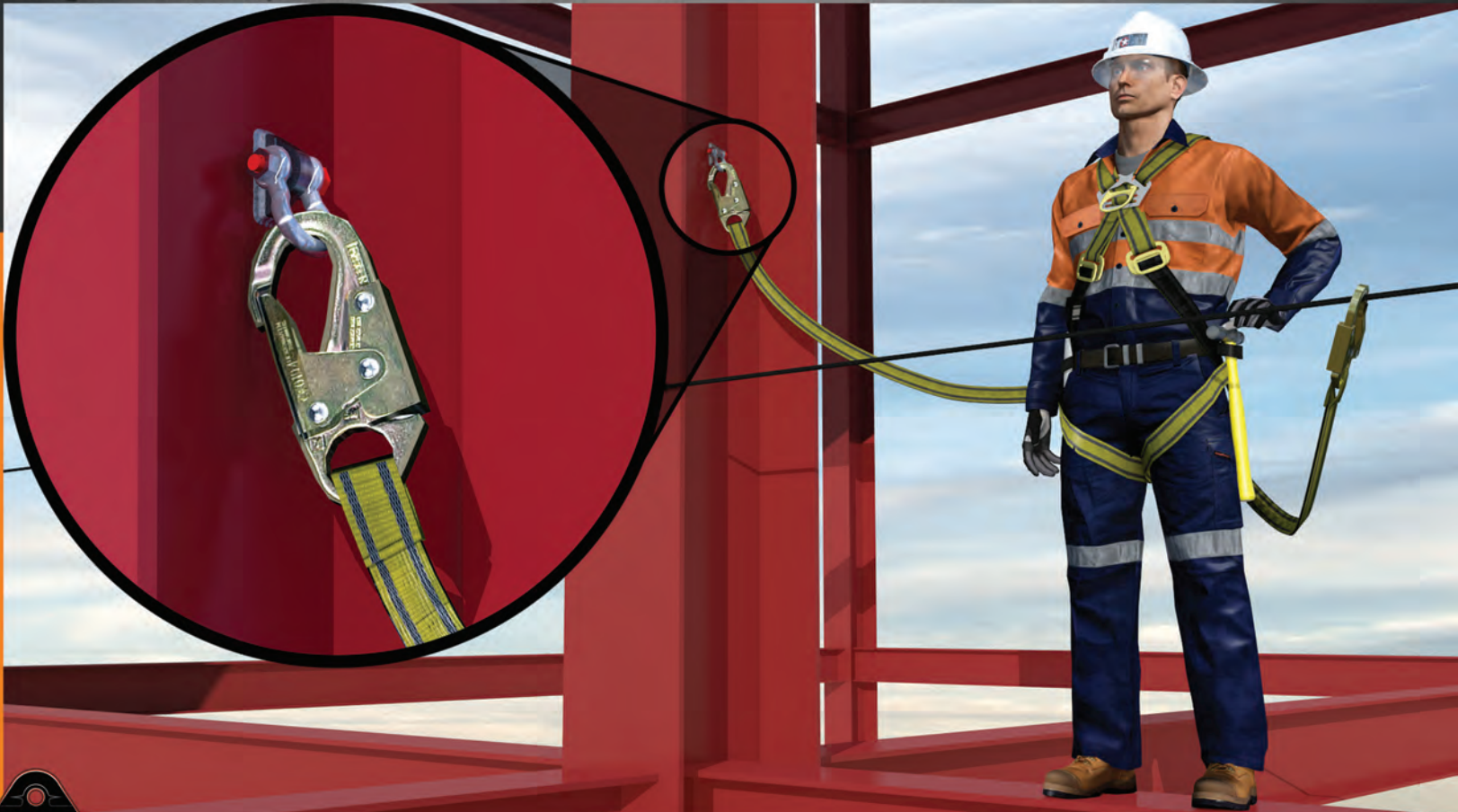
PART: PMTO



APPLICATION: When the PMTO is welded to a steel structure, the worker's lanyard can be attached to the shackle of the anchor point. The anchor may also be used to prevent a variety of tools from falling. The PMTO is rated for up to 220 pound solid weight.

FEATURES: The PMTO is a small, light-weight and easy to use device made of quality grade cast ASTM A36 steel which will withstand the fall impact load. The PMTO is designed with a 1 Ton ASME B30.26 shackle to withstand loading in any direction.

HOW TO USE THE PMTO: The PMTO must only be used under the supervision of a qualified person who is trained in the use of this product in accordance with this literature. In order to meet the requirements of ANSI Z359.12, the PFAS shall have drawings and/or specifications prepared by or under the direction of an engineer. Only use one PMTO per worker. Use an ANSI approved energy absorbing or self retracting lanyard (SRL). Do not use with any leading edge SRL devices (LESRL) unless authorized by the manufacturer. Prior to each use, the PMTO must be inspected for damage, cracks or other irregularities. This includes verifying that the shackle is securely fastened and swivels freely. Prior to each use, verify that the tag shows a purchase date within two years and that the Padeye anchor has passed the monthly safety inspection. If ANY irregularities are found, do not use the PMTO, take it out of service and notify the responsible safety personnel. If the PMTO is subjected to a drop load, it must be taken out of service and inspected by a qualified person in accordance with OSAH requirements. The qualified person must ensure that the PMTO has been installed and welded in accordance with AWS D1.1 or AWS D14.1. Ensure the metal attachment and structure are strong enough to sustain an impact load.

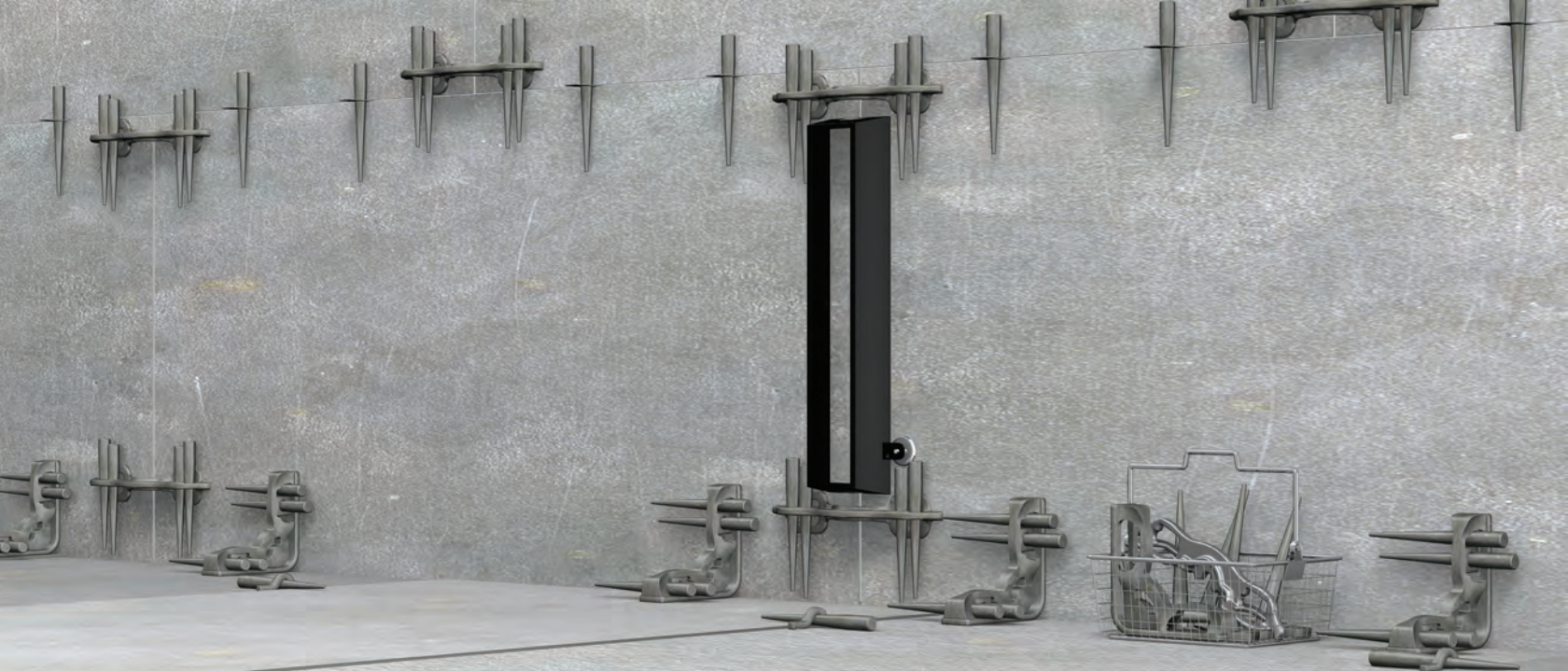


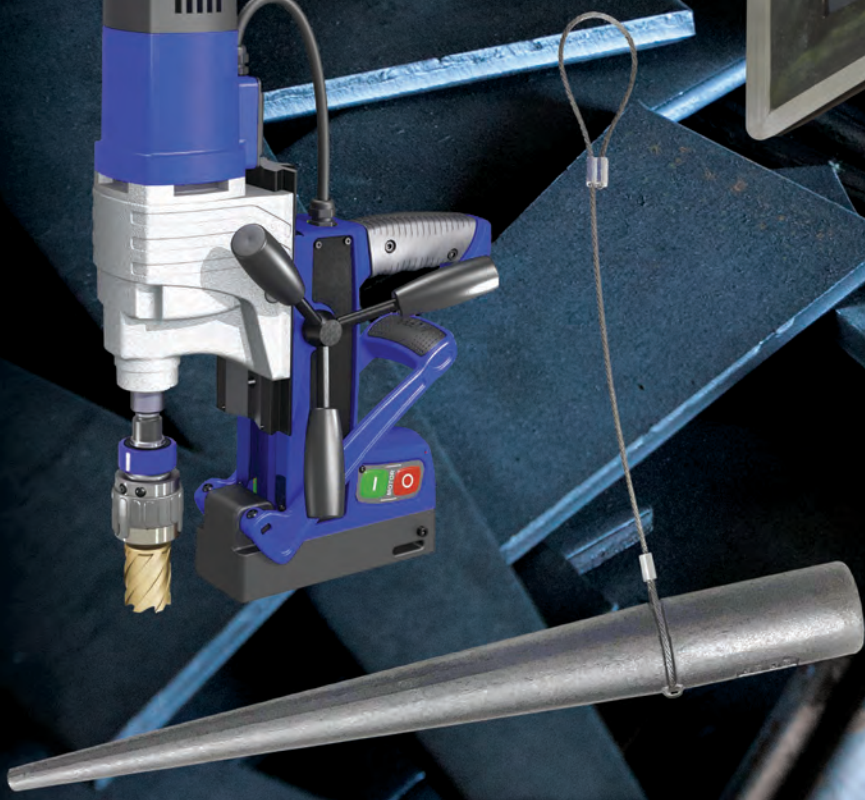
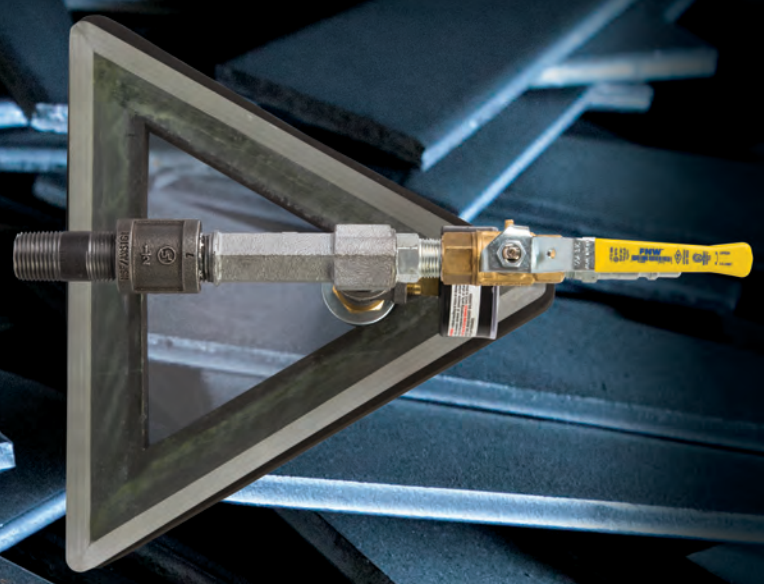
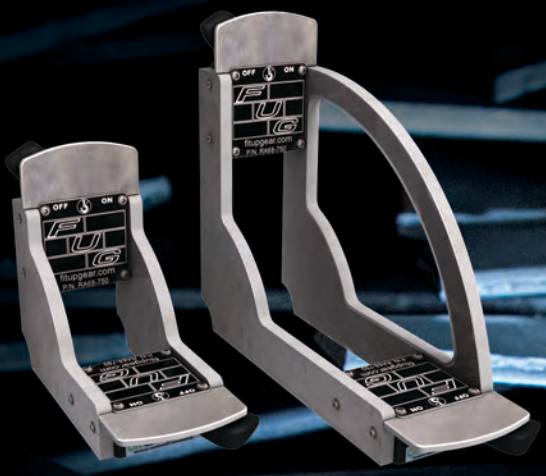


Fit Up Gear
Innovators of Fitting Aids
www.fitupgear.com

*When there is more at stake
than just saving time, who do
you trust to get the job done?*

*Fit Up Gear® fitting and alignment
tools are used to build the latest
military nuclear submarines*





Harbach Marketing, Inc.
218 W. Richey Road • Houston, TX 77090
Phone: +1 281.440.1725 • Fax: +1 281.440.1724
www.Har-Bach.com

Fit Up Gear®, No-Mar® and National Clamp
www.fitupgear.com

Padeyes Engineered and Certified to Meet All ASME BTH-1 Categories and Classes
www.padeye.com

Changing the Mindset of the Welding Industry

Distributed by



No-Mar® and Fit Up Gear® are product lines of Romar/MEC, Inc., a Har-Bach Marketing, Inc. Company