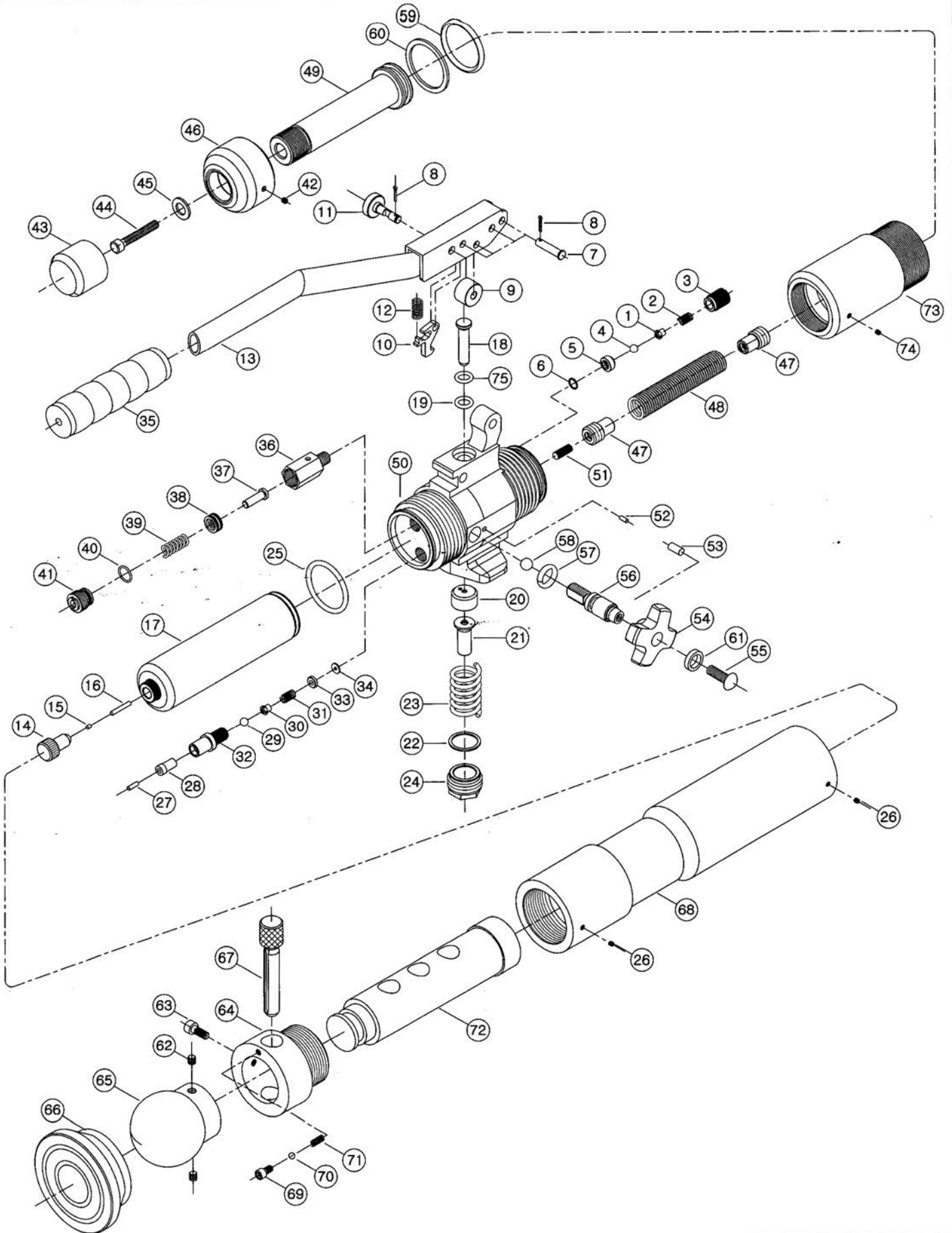


Parts
Breakdown

HYDRA-PACK

By Har-Bach Marketing

**PART:
HP10T**



PARTS LIST

Hydra-Pack 10-Ton Model - PART: HP10T

ITEM NO.	DESCRIPTION	SPEC	Q'TY	CODE NO.	
1	BALL PUCH		1	31A-36	
2	CHECK SPRING		1	31A-37	
3	CHECK BODY		1	31A-40	
4	STEEL BALL	3/16"	1	SB3-16	
5	BALL CASING		1	31A-75	
6	O-RING	S6	1	OS-06	
7	LEVER PIN		4	18F-07	
8	SPLIT PIN	Ø2X12L	5	SPP-2-12	
9	ROLLER		1	18F-09	
10	LOOK PLATE		1	18F-10	
11	LOOK PIN		1	18F-11	
12	LOOK PLATE SPRING		1	18F-12	
13	LEVER		1	18F-13	
14	OIL TUBE CAP		1	31A-84	
15	MAGNET	Ø3 X 3L	1	31A-85	
16	PIN	Ø3 X 20L	1	31A-86	
17	OIL TUBE		1	18F-17	
18	PLUNGER		1	18F-18	
19	O-RING	P8	1	OP-08	
20	SPRING CAP		1	18F-20	
21	PLUNGER ASSISTER		1	18F-21	
22	WASHER-COPPER	Ø20 Ø25 2t	1	18F-22	
23	PLUNGER SPRING		1	18F-23	
24	PLUNGER NUT		1	18F-24	
25	O-RING	P42	1	OP-42	
26	SET SCREW	M4 X 5L	2	SWB4-5	
27	MAGNETIIC PIN		1	31A-33	
28	STRAINER		1	31A-34	
29	STEEL BALL	3/16"	1	SB3-16	

PARTS LIST

Hydra-Pack 10-Ton Model - PART: HP10T

ITEM NO.	DESCRIPTION	SPEC	Q'TY	CODE NO.	
30	BALL PUCH		1	31A-36	
31	CHECK SPRING		1	31A-37	
32	MULTI BASE		1	31A-38	
33	SPRING CASING		1	31A-39	
34	WASHER-COPPER	Ø8.8 Ø3.2 1t	1	31A-77	
35	HAND GRIP		1	18F-35	
36	HIGH RELIEF BODY		1	18A-46	
37	RELIEF ROD		1	18A-47	
38	SPRING GUIDE		1	18A-48	
39	HIGH RELIEF SPRING		1	18A-49	
40	O-RING	S12	1	OS-12	
41	HIGH RELIEF BOLT		1	18F-51	
42	SET SCREW	M5 X 5L	1	SWB5-5	
43	HEAD		1	18F-43-1	
44	WRENCH BOLT	M6 X 35L	1	WB6-35	
45	WASHER-COPPER	1T	1	BW6-1	
46	COVER NUT		1	18H-46	
47	SPRING BOLT		1	2E-08	
48	PISTON SPRING		1	18H-48	
49	PISTON-1		1	18H-49-1	
50	PUMP BODY		1	18H-50	
51	SET SCREW	M6 X 25L	1	SWB6-25	
52	SPRING PIN	Ø3 X 10L	1	SP3-10	
53	SPRING PIN	Ø5 X 10L	1	SP3-10	
54	HANDLE COCK		1	18F-54	
55	동근머리렌치볼트	M5 X 15L	1	RWB5-15	
56	DISCHARGE V/V ROD		1	18F-56	
57	O-RING	P7	1	OP-07	
58	STEEL BALL	7/32"	1	SB7-32	

PARTS LIST

Hydra-Pack 10-Ton Model - PART: HP10T

ITEM NO.	DESCRIPTION	SPEC	Q'TY	CODE NO.	
59	O-RING	U321	1	OU-321	
60	BACKUP RING	P35A	1	BP-35A	
61	SPRING WASHER	M5	1	SW-5	
62	SET SCREW	M6 X 6L	2	SWB6-6	
63	WRENCH BOLT	M6 X 15L	1	WB6-15	
64	FIX		1	18D-06	
65	SADDLE HEAD		1	18B-02	
66	SADDLE(Ø94)		1	18B-01-1	
66	SADDLE(Ø68)		1	18B-01-2	
67	FIX PIN		1	18D-04	
68	BODY		1	18H-68	
69	WRENCH BOLT	M6	1	18B-65	
70	STEEL BALL	5/32"	1	SB5-32	
71	SPRING		1	18B-64	
72	ROD		1	18H-72	
73	CYLINDER		1	18H-73	
74	SET SCREW	M4 X 5L	1	SWB4-5	
75	BACKUP RING	P8	1	BP-08	